

Datasheet for ABIN952252

anti-FAM82B antibody (N-Term)**3** Images[Go to Product page](#)

Overview

Quantity:	0.4 mL
Target:	FAM82B (RMDN1)
Binding Specificity:	AA 83-112, N-Term
Reactivity:	Human, Mouse
Host:	Rabbit
Clonality:	Polyclonal
Conjugate:	This FAM82B antibody is un-conjugated
Application:	Western Blotting (WB), Immunohistochemistry (Paraffin-embedded Sections) (IHC (p)), Enzyme Immunoassay (EIA)

Product Details

Immunogen:	KLH conjugated synthetic peptide between 83-112 amino acids from the N-terminal region of Human RMD1. Genename: FAM82B
Isotype:	Ig Fraction
Specificity:	This antibody recognizes Human and Mouse FAM82B (N-term).
Purification:	Protein A column, followed by peptide affinity purification

Target Details

Target:	FAM82B (RMDN1)
Alternative Name:	FAM82B (RMDN1 Products)

Target Details

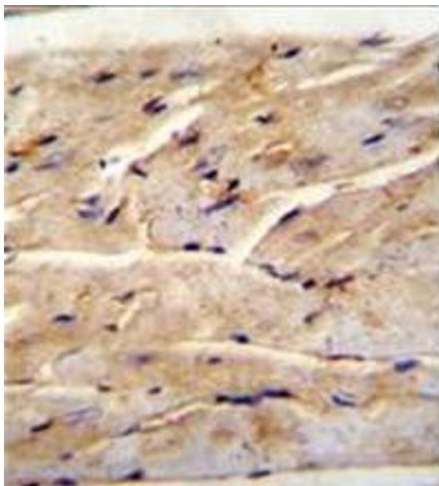
Background:	FAM82B belongs to the FAM82/RMD family and contains two TPR repeats. The specific function of FAM82B is not yet known.Synonyms: CGI-90, RMD-1, Regulator of microtubule dynamics protein 1, hRMD1
Molecular Weight:	35808 Da
Gene ID:	51115
NCBI Accession:	NP_057117

Application Details

Application Notes:	Optimal working dilution should be determined by the investigator.
Restrictions:	For Research Use only

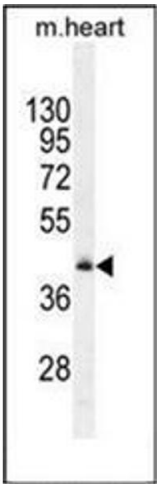
Handling

Format:	Liquid
Concentration:	0.25 mg/mL
Buffer:	PBS, 0.09 % (W/V) Sodium Azide
Preservative:	Sodium azide
Precaution of Use:	This product contains sodium azide: a POISONOUS AND HAZARDOUS SUBSTANCE which should be handled by trained staff only.
Handling Advice:	Avoid repeated freezing and thawing.
Storage:	4 °C/-20 °C
Storage Comment:	Store undiluted at 2-8 °C for one month or (in aliquots) at -20 °C for longer.



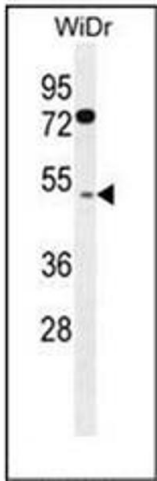
Immunohistochemistry (Paraffin-embedded Sections)

Image 1. Formalin fixed, paraffin embedded Mouse heart tissue stained with FAM82B Antibody (N-term) followed by peroxidase conjugation of the secondary antibody and DAB staining.



Western Blotting

Image 2. Western blot analysis of FAM82B Antibody (N-term) in Mouse heart tissue lysates (35ug/lane). This demonstrates the RMD1 antibody detected the RMD1 protein (arrow).



Western Blotting

Image 3. Western blot analysis of FAM82B Antibody (N-term) in WiDr cell line lysates (35ug/lane). This demonstrates the RMD1 antibody detected the RMD1 protein (arrow).