

Datasheet for ABIN952264  
**anti-FANCC antibody (C-Term)**[Go to Product page](#)

## 4 Images

## Overview

Quantity:	0.4 mL
Target:	FANCC
Binding Specificity:	AA 529-558, C-Term
Reactivity:	Human
Host:	Rabbit
Clonality:	Polyclonal
Conjugate:	This FANCC antibody is un-conjugated
Application:	Western Blotting (WB), Immunofluorescence (IF), Flow Cytometry (FACS), Immunohistochemistry (Paraffin-embedded Sections) (IHC (p)), Enzyme Immunoassay (EIA)

## Product Details

Immunogen:	KLH conjugated synthetic peptide between 529~558 amino acids from the C-terminal region of human FANCC
Isotype:	Ig Fraction
Specificity:	This antibody recognizes Human FANCC (C-term).
Purification:	Affinity Chromatography on Protein A

## Target Details

Target:	FANCC
Alternative Name:	FANCC ( <a href="#">FANCC Products</a> )

## Target Details

**Background:** The Fanconi anemia complementation group (FANC) currently includes FANCA, FANCB, FANCC, FANCD1 (also called BRCA2), FANCD2, FANCE, FANCF, FANCG, FANCI, FANCI (also called BRIP1), FANCL, FANCM and FANCN (also called PALB2). The previously defined group FANCH is the same as FANCA. Fanconi anemia is a genetically heterogeneous recessive disorder characterized by cytogenetic instability, hypersensitivity to DNA crosslinking agents, increased chromosomal breakage, and defective DNA repair. The members of the Fanconi anemia complementation group do not share sequence similarity, they are related by their assembly into a common nuclear protein complex. This protein is for complementation group C. Synonyms: FAC, FACC, Fanconi anemia group C protein

**Molecular Weight:** 63429 Da

**Gene ID:** 2176

**NCBI Accession:** [NP\\_000127](#)

**Pathways:** [DNA Damage Repair](#)

## Application Details

**Application Notes:** Optimal working dilution should be determined by the investigator.

**Restrictions:** For Research Use only

## Handling

**Format:** Liquid

**Concentration:** 0.25 mg/mL

**Buffer:** PBS containing 0.09 % (W/V) Sodium Azide as preservative

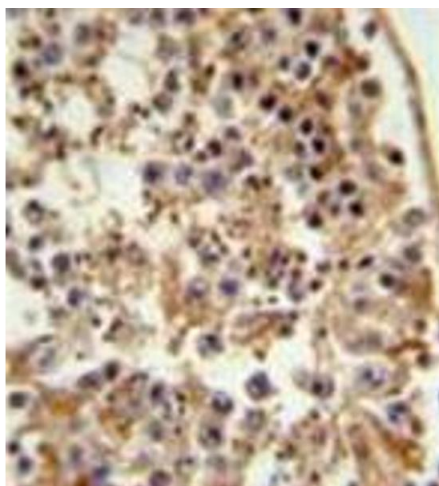
**Preservative:** Sodium azide

**Precaution of Use:** This product contains sodium azide: a POISONOUS AND HAZARDOUS SUBSTANCE which should be handled by trained staff only.

**Handling Advice:** Avoid repeated freezing and thawing.

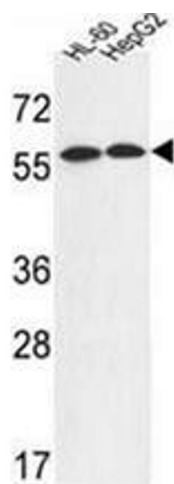
**Storage:** 4 °C/-20 °C

**Storage Comment:** Store undiluted at 2-8 °C for one month or (in aliquots) at -20 °C for longer.



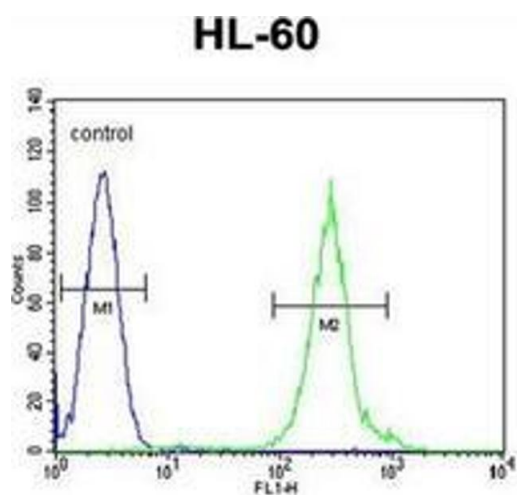
#### Immunohistochemistry (Paraffin-embedded Sections)

**Image 1.** Formalin fixed and paraffin embedded testis tissue reacted with FANCC Antibody (C-term) followed by peroxidase conjugation of the secondary antibody and DAB staining.



#### Western Blotting

**Image 2.** Western blot analysis of FANCC Antibody (C-term) in HL-60, HepG2 cell line lysates (35ug/lane). This demonstrates the FANCC antibody detected the FANCC protein (arrow).



#### Flow Cytometry

**Image 3.** Flow cytometric analysis of HL-60 cells using FANCC Antibody (C-term) Cat.-No AP51608PU-N (right histogram) compared to a negative control cell (left histogram). FITC-conjugated goat-anti-rabbit secondary antibodies were used for the analysis.

Please check the [product details page](#) for more images. Overall 4 images are available for ABIN952264.