

Datasheet for ABIN952270  
**anti-FBLIM1 antibody (C-Term)**

## 2 Images

[Go to Product page](#)

## Overview

Quantity:	0.4 mL
Target:	FBLIM1
Binding Specificity:	AA 301-331, C-Term
Reactivity:	Human
Host:	Rabbit
Clonality:	Polyclonal
Conjugate:	This FBLIM1 antibody is un-conjugated
Application:	Western Blotting (WB), Immunohistochemistry (Paraffin-embedded Sections) (IHC (p)), Enzyme Immunoassay (EIA)

## Product Details

Immunogen:	KLH conjugated synthetic peptide between 301-331 amino acids from the C-terminal region of Human FBLIM1
Isotype:	Ig Fraction
Specificity:	This antibody recognizes Human FBLIM1 (C-term).
Purification:	Affinity Chromatography on Protein A

## Target Details

Target:	FBLIM1
Alternative Name:	FBLIM1 ( <a href="#">FBLIM1 Products</a> )

## Target Details

**Background:** This gene encodes a protein with an N-terminal filamin-binding domain, a central proline-rich domain, and, multiple C-terminal LIM domains. This protein localizes at cell junctions and may link cell adhesion structures to the actin cytoskeleton. This protein may be involved in the assembly and stabilization of actin-filaments and likely plays a role in modulating cell adhesion, cell morphology and cell motility. This protein also localizes to the nucleus and may affect cardiomyocyte differentiation after binding with the CSX/NKX2-5 transcription factor. Alternative splicing results in multiple transcript variants encoding different isoforms. Synonyms: FBLP-1, FBLP1, Filamin-binding LIM protein 1, MIG2-interacting protein, Migfilin, Mitogen-inducible 2-interacting protein

**Molecular Weight:** 40670 Da

**Gene ID:** 54751

**NCBI Accession:** [NP\\_001019386](#)

## Application Details

**Application Notes:** Optimal working dilution should be determined by the investigator.

**Restrictions:** For Research Use only

## Handling

**Format:** Liquid

**Concentration:** 0.25 mg/mL

**Buffer:** PBS containing 0.09 % (W/V) Sodium Azide as preservative

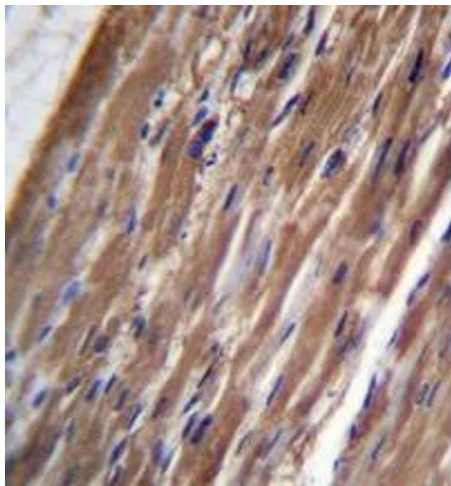
**Preservative:** Sodium azide

**Precaution of Use:** This product contains sodium azide: a POISONOUS AND HAZARDOUS SUBSTANCE which should be handled by trained staff only.

**Handling Advice:** Avoid repeated freezing and thawing.

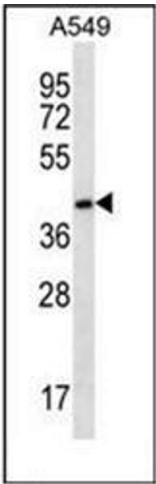
**Storage:** 4 °C/-20 °C

**Storage Comment:** Store undiluted at 2-8 °C for one month or (in aliquots) at -20 °C for longer.



**Immunohistochemistry (Paraffin-embedded Sections)**

**Image 1.** Immunohistochemistry analysis in formalin fixed and paraffin embedded human heart tissue reacted with FBLIM1 Antibody (C-term) followed by peroxidase conjugation of the secondary antibody and DAB staining.



**Western Blotting**

**Image 2.** Western blot analysis of FBLIM1 Antibody (C-term) in A549 cell line lysates (35ug/lane). This demonstrates the FBLIM1 antibody detected the FBLIM1 protein (arrow).