

Datasheet for ABIN952276

anti-FBXW11 antibody (Middle Region)**3** Images[Go to Product page](#)

Overview

Quantity:	0.4 mL
Target:	FBXW11
Binding Specificity:	AA 175-204, Middle Region
Reactivity:	Human
Host:	Rabbit
Clonality:	Polyclonal
Conjugate:	This FBXW11 antibody is un-conjugated
Application:	Western Blotting (WB), Flow Cytometry (FACS), Immunohistochemistry (Paraffin-embedded Sections) (IHC (p)), Enzyme Immunoassay (EIA)

Product Details

Immunogen:	KLH conjugated synthetic peptide between 175-204 amino acids from the Central region of Human FBXW11.
Isotype:	Ig Fraction
Specificity:	This antibody recognizes Human FBXW11 (Center).
Purification:	Affinity Chromatography on Protein A

Target Details

Target:	FBXW11
Alternative Name:	FBW1B (FBXW11 Products)

Target Details

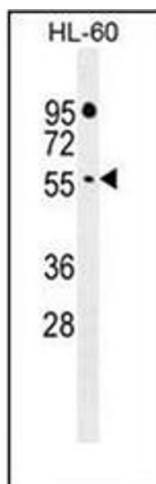
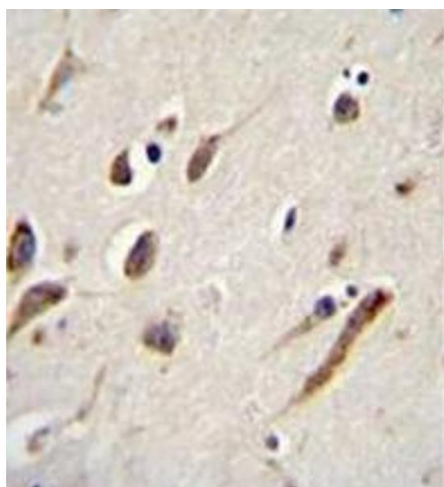
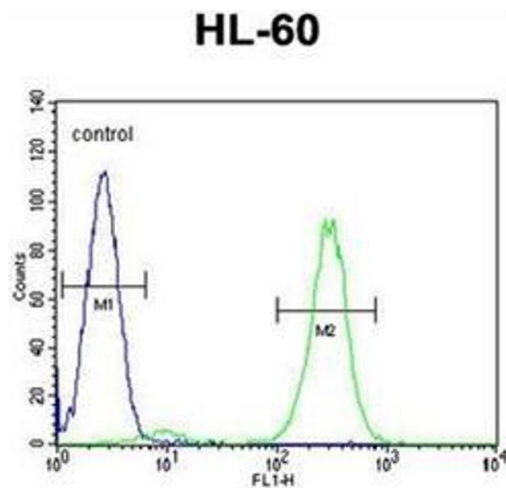
Background:	This gene encodes a member of the F-box protein family which is characterized by an approximately 40 amino acid motif, the F-box. The F-box proteins constitute one of the four subunits of ubiquitin protein ligase complex called SCFs (SKP1-cullin-F-box), which function in phosphorylation-dependent ubiquitination. The F-box proteins are divided into 3 classes: Fbws containing WD-40 domains, Fbls containing leucine-rich repeats, and Fbxs containing either different protein-protein interaction modules or no recognizable motifs. The protein encoded by this gene belongs to the Fbws class and, in addition to an F-box, contains multiple WD40 repeats. This gene contains at least 14 exons, and its alternative splicing generates 3 transcript variants diverging at the presence/absence of two alternate exons.Synonyms: BTRCP2, F-box and WD repeats protein beta-TrCP2, F-box/WD repeat-containing protein 11, F-box/WD repeat-containing protein 1B, FBXW11, FBXW1B, HOS, Homologous to Slimb protein, KIAA0696, beta-TrCP2
Molecular Weight:	62091 Da
Gene ID:	23291
NCBI Accession:	NP_036432

Application Details

Application Notes:	Optimal working dilution should be determined by the investigator.
Restrictions:	For Research Use only

Handling

Format:	Liquid
Concentration:	0.25 mg/mL
Buffer:	PBS containing 0.09 % (W/V) Sodium Azide as preservative
Preservative:	Sodium azide
Precaution of Use:	This product contains sodium azide: a POISONOUS AND HAZARDOUS SUBSTANCE which should be handled by trained staff only.
Handling Advice:	Avoid repeated freezing and thawing.
Storage:	4 °C/-20 °C
Storage Comment:	Store undiluted at 2-8 °C for one month or (in aliquots) at -20 °C for longer.



Flow Cytometry

Image 1. Flow cytometric analysis of HL-60 cells using FBXW11 Antibody (Center) Cat.-Ni AP51635PU-N (right histogram) compared to a negative control cell (left histogram). FITC-conjugated goat-anti-rabbit secondary antibodies were used for the analysis.

Immunohistochemistry (Paraffin-embedded Sections)

Image 2. Immunohistochemistry analysis in formalin fixed and paraffin embedded human brain tissue reacted with FBXW11 Antibody (Center) followed by peroxidase conjugation of the secondary antibody and DAB staining.

Western Blotting

Image 3. Western blot analysis of FBXW11 Antibody (Center) in HL-60 cell line lysates (35ug/lane). This demonstrates the FBXW11 antibody detected the FBXW11 protein (arrow).