

Datasheet for ABIN952293
anti-FBXW12 antibody (C-Term)

3 Images

[Go to Product page](#)

Overview

Quantity:	0.4 mL
Target:	FBXW12
Binding Specificity:	AA 298-328, C-Term
Reactivity:	Human
Host:	Rabbit
Clonality:	Polyclonal
Application:	Western Blotting (WB), Flow Cytometry (FACS), Immunohistochemistry (Paraffin-embedded Sections) (IHC (p)), Enzyme Immunoassay (EIA)

Product Details

Immunogen:	KLH conjugated synthetic peptide between 298-328 amino acids from the C-terminal region of Human FBXW12
Isotype:	Ig Fraction
Specificity:	This antibody recognizes Human FBXW12 (C-term).
Purification:	Protein A column, followed by peptide affinity purification

Target Details

Target:	FBXW12
Alternative Name:	FBXW12 (FBXW12 Products)
Background:	Members of the F-box protein family, such as FBXW12, are characterized by an approximately 40-amino acid F-box motif. SCF complexes, formed by SKP1 (MIM 601434), cullin (see CUL1,

Target Details

MIM 603034), and F-box proteins, act as protein-ubiquitin ligases. F-box proteins interact with SKP1 through the F box, and they interact with ubiquitination targets through other protein interaction domains (Jin et al., 2004 [PubMed 15520277]).[supplied by OMIM].Synonyms: F-box and WD-40 domain-containing protein 12, F-box only protein 35, F-box/WD repeat-containing protein 12, FBW12, FBX012, FBX035

Molecular Weight: 53056 Da

Gene ID: 285231

NCBI Accession: [NP_001153399](#)

Application Details

Application Notes: Optimal working dilution should be determined by the investigator.

Restrictions: For Research Use only

Handling

Format: Liquid

Concentration: 0.25 mg/mL

Buffer: PBS containing 0.09 % (W/V) Sodium Azide as preservative

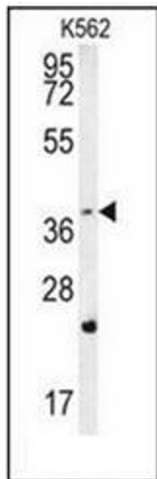
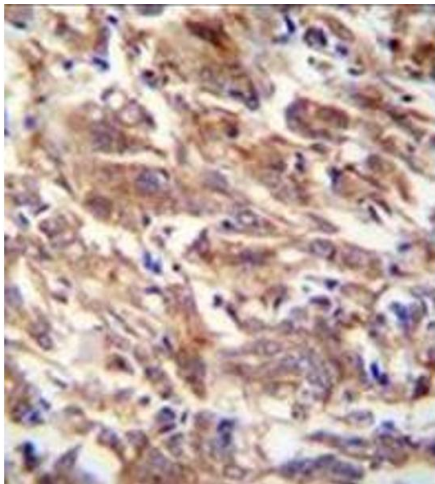
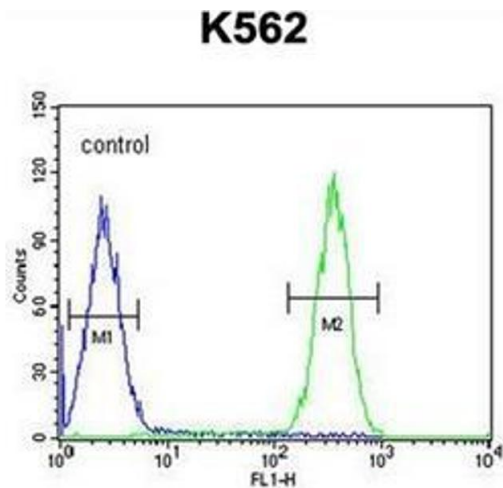
Preservative: Sodium azide

Precaution of Use: This product contains sodium azide: a POISONOUS AND HAZARDOUS SUBSTANCE which should be handled by trained staff only.

Handling Advice: Avoid repeated freezing and thawing.

Storage: 4 °C/-20 °C

Storage Comment: Store undiluted at 2-8 °C for one month or (in aliquots) at -20 °C for longer.



Flow Cytometry

Image 1. Flow cytometric analysis of K562 cells using FBXW12 Antibody (C-term) Cat.-No AP51636PU-N (right histogram) compared to a negative control cell (left histogram). FITC-conjugated goat-anti-rabbit secondary antibodies were used for the analysis.

Immunohistochemistry (Paraffin-embedded Sections)

Image 2. Immunohistochemistry analysis in formalin fixed and paraffin embedded human breast carcinoma reacted with FBXW12 Antibody (C-term) followed by peroxidase conjugation of the secondary antibody and DAB staining.

Western Blotting

Image 3. Western blot analysis of FBXW12 Antibody (C-term) in K562 cell line lysates (35ug/lane). This demonstrates the FBXW12 antibody detected the FBXW12 protein (arrow).