

Datasheet for ABIN952296  
**anti-FBXW8 antibody (Middle Region)**[Go to Product page](#)

## 4 Images

## Overview

|                      |  |
|----------------------|--|
| Quantity:            | 0.4 mL   |
| Target:              | FBXW8  |
| Binding Specificity: | AA 273-303, Middle Region  |
| Reactivity:          | Human, Mouse   |
| Host:                | Rabbit   |
| Clonality:           | Polyclonal   |
| Conjugate:           | This FBXW8 antibody is un-conjugated   |
| Application:         | Western Blotting (WB), Immunohistochemistry (Paraffin-embedded Sections) (IHC (p)), Enzyme Immunoassay (EIA) |

## Product Details

|                             |   |
|-----------------------------|---|
| Immunogen:                  | KLH conjugated synthetic peptide between 273-303 amino acids from the Central region of human FBXW8 |
| Isotype:                    | Ig Fraction   |
| Specificity:                | This antibody reacts to FBXW8.  |
| Cross-Reactivity (Details): | Species reactivity (tested): Human and Mouse.   |
| Purification:               | Affinity chromatography on Protein A  |

## Target Details

|         |       |
|---------|-------|
| Target: | FBXW8 |
|---------|-------|

## Target Details

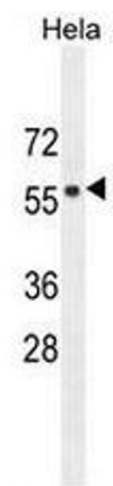
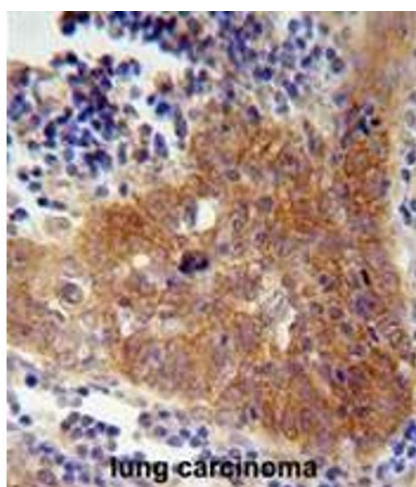
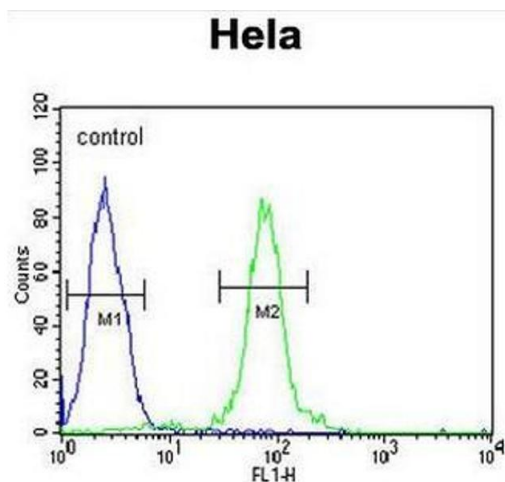
|                   |  |
|-------------------|--|
| Alternative Name: | FBXW8 ( <a href="#">FBXW8 Products</a> )   |
| Background:       | <p>This gene encodes a member of the F-box protein family, members of which are characterized by an approximately 40 amino acid motif, the F-box. The F-box proteins constitute one of the four subunits of ubiquitin protein ligase complex called SCFs (SKP1-cullin-F-box), which function in phosphorylation-dependent ubiquitination. The F-box proteins are divided into three classes: Fbws containing WD-40 domains, Fbls containing leucine-rich repeats, and Fbxs containing either different protein-protein interaction modules or no recognizable motifs. The protein encoded by this gene contains a WD-40 domain, in addition to an F-box motif, so it belongs to the Fbw class. Alternatively spliced transcript variants encoding distinct isoforms have been identified for this gene. Synonyms: F-box and WD-40 domain-containing protein 8, F-box only protein 29, F-box/WD repeat-containing protein 8, FBW6, FBW8, FBX29, FBXO29, FBXW6</p> |
| Molecular Weight: | 67394 Da   |
| Gene ID:          | 26259  |
| NCBI Accession:   | <a href="#">NP_036306</a>  |

## Application Details

|                    |  |
|--------------------|--|
| Application Notes: | Optimal working dilution should be determined by the investigator. |
| Restrictions:      | For Research Use only  |

## Handling

|                    |  |
|--------------------|--|
| Format:            | Liquid   |
| Concentration:     | 0.25 mg/mL   |
| Buffer:            | PBS, 0.09 % (W/V) sodium azide   |
| Preservative:      | Sodium azide   |
| Precaution of Use: | This product contains sodium azide: a POISONOUS AND HAZARDOUS SUBSTANCE which should be handled by trained staff only. |
| Handling Advice:   | Avoid repeated freezing and thawing.   |
| Storage:           | 4 °C/-20 °C  |
| Storage Comment:   | Store the antibody undiluted at 2-8 °C for one month or (in aliquots) at -20 °C for longer.                            |



#### Flow Cytometry

**Image 1.** FBXW8 Antibody (Center) flow cytometric analysis of Hela cells (right histogram) compared to a negative control cell (left histogram). FITC-conjugated goat-anti-rabbit secondary antibodies were used for the analysis.

#### Immunohistochemistry (Paraffin-embedded Sections)

**Image 2.** FBXW8 Antibody (Center) immunohistochemistry analysis in formalin fixed and paraffin embedded human lung carcinoma followed by peroxidase conjugation of the secondary antibody and DAB staining. This data demonstrates the use of the FBXW8 Antibody (Center) for immunohistochemistry. Clinical relevance has not been evaluated.

#### Western Blotting

**Image 3.** FBXW8 Antibody (Center) western blot analysis in Hela cell line lysates (35 µg/lane). This demonstrates the FBXW8 antibody detected the FBXW8 protein (arrow).

Please check the [product details page](#) for more images. Overall 4 images are available for ABIN952296.