

Datasheet for ABIN952298
anti-FCGR1B antibody (C-Term)

3 Images

[Go to Product page](#)

Overview

Quantity:	0.4 mL
Target:	FCGR1B
Binding Specificity:	AA 251-280, C-Term
Reactivity:	Human
Host:	Rabbit
Clonality:	Polyclonal
Conjugate:	This FCGR1B antibody is un-conjugated
Application:	Western Blotting (WB), Flow Cytometry (FACS), Immunohistochemistry (Paraffin-embedded Sections) (IHC (p)), Enzyme Immunoassay (EIA)

Product Details

Immunogen:	KLH conjugated synthetic peptide between 251~280 amino acids from the C-terminal region of human FCGR1B
Isotype:	Ig Fraction
Specificity:	This antibody reacts to FCGR1B.
Cross-Reactivity (Details):	Species reactivity (tested):Human.
Purification:	Affinity chromatography on Protein A

Target Details

Target:	FCGR1B
---------	--------

Target Details

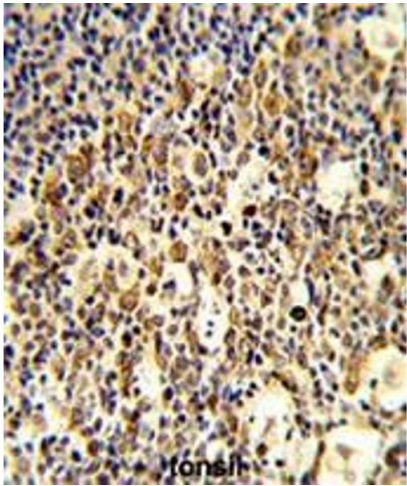
Alternative Name:	FCGR1B (FCGR1B Products)
Background:	FCGR1B may bind to the Fc region of immunoglobulins gamma with a low affinity compared to FCGR1A. This protein may function in the humoral immune response.Synonyms: Fc-gamma RIB, FcRIB, High affinity immunoglobulin gamma Fc receptor IB, IGFRB, IgG Fc receptor IB, hFcgammaRIB
Molecular Weight:	32232 Da
Gene ID:	2210
NCBI Accession:	NP_001004340

Application Details

Application Notes:	Optimal working dilution should be determined by the investigator.
Restrictions:	For Research Use only

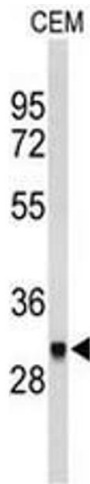
Handling

Format:	Liquid
Concentration:	0.25 mg/mL
Buffer:	PBS, 0.09 % (W/V) sodium azide
Preservative:	Sodium azide
Precaution of Use:	This product contains sodium azide: a POISONOUS AND HAZARDOUS SUBSTANCE which should be handled by trained staff only.
Handling Advice:	Avoid repeated freezing and thawing.
Storage:	4 °C/-20 °C
Storage Comment:	Store the antibody undiluted at 2-8 °C for one month or (in aliquots) at -20 °C for longer.



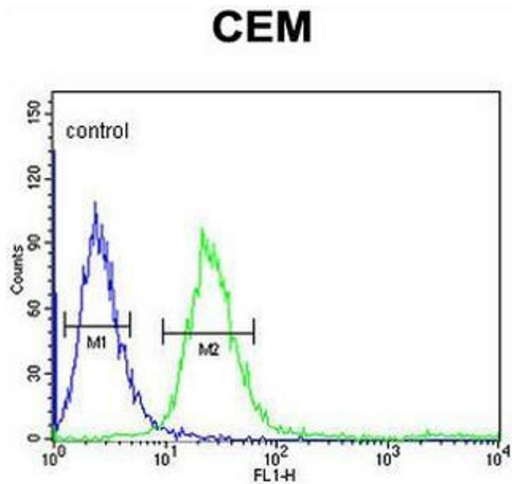
Immunohistochemistry (Paraffin-embedded Sections)

Image 1. Formalin-fixed and paraffin-embedded human tonsil reacted with FCGR1B Antibody (C-term), which was peroxidase-conjugated to the secondary antibody, followed by DAB staining. This data demonstrates the use of this antibody for immunohistochemistry; clinical relevance has not been evaluated.



Western Blotting

Image 2. Western blot analysis of FCGR1B Antibody (C-term) in CEM cell line lysates (35µg/lane). FCGR1B (arrow) was detected using the purified Pab.



Flow Cytometry

Image 3. FCGR1B Antibody (C-term) flow cytometric analysis of CEM cells (right histogram) compared to a negative control cell (left histogram).FITC-conjugated goat-anti-rabbit secondary antibodies were used for the analysis.