

Datasheet for ABIN952305
anti-FGD6 antibody (C-Term)

2 Images

[Go to Product page](#)

Overview

Quantity:	0.4 mL
Target:	FGD6
Binding Specificity:	AA 1331-1359, C-Term
Reactivity:	Human
Host:	Rabbit
Clonality:	Polyclonal
Application:	Western Blotting (WB), Enzyme Immunoassay (EIA)

Product Details

Immunogen:	KLH conjugated synthetic peptide between 1331-1359 amino acids from the C-terminal region of human FGD6
Isotype:	Ig Fraction
Specificity:	This antibody reacts to FGD6.
Cross-Reactivity (Details):	Species reactivity (tested):Human.
Purification:	Affinity chromatography on Protein A

Target Details

Target:	FGD6
Alternative Name:	FGD6 (FGD6 Products)
Background:	Component of clathrin-coated pits and vesicles, that may link the endocytic machinery to the

Target Details

actin cytoskeleton. Binds 3-phosphoinositides (via ENTH domain). May act through the ENTH domain to promote cell survival by stabilizing receptor tyrosine kinases following ligand-induced endocytosis. Synonyms: FYVE, KIAA1362, RhoGEF and PH domain-containing protein 6, ZFYVE24, Zinc finger FYVE domain-containing protein 24

Molecular Weight: 160816 Da

Gene ID: 55785

NCBI Accession: [NP_060821](#)

Application Details

Application Notes: Optimal working dilution should be determined by the investigator.

Restrictions: For Research Use only

Handling

Format: Liquid

Concentration: 0.25 mg/mL

Buffer: PBS, 0.09 % (W/V) sodium azide

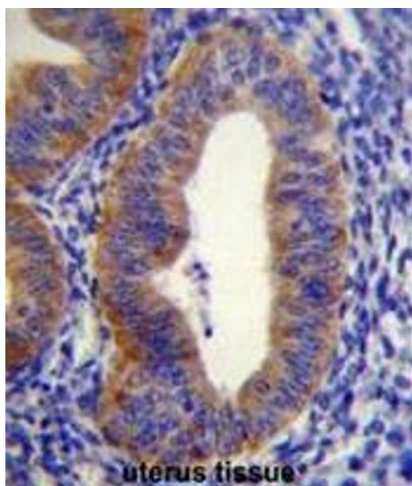
Preservative: Sodium azide

Precaution of Use: This product contains sodium azide: a POISONOUS AND HAZARDOUS SUBSTANCE which should be handled by trained staff only.

Handling Advice: Avoid repeated freezing and thawing.

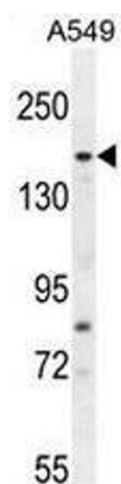
Storage: 4 °C/-20 °C

Storage Comment: Store the antibody undiluted at 2-8 °C for one month or (in aliquots) at -20 °C for longer.



Immunohistochemistry (Paraffin-embedded Sections)

Image 1. FGD6 Antibody (C-term) immunohistochemistry analysis in formalin fixed and paraffin embedded human uterus tissue followed by peroxidase conjugation of the secondary antibody and DAB staining. This data demonstrates the use of FGD6 Antibody (C-term) for immunohistochemistry. Clinical relevance has not been evaluated.



Western Blotting

Image 2. FGD6 Antibody (C-term) western blot analysis in A549 cell line lysates (35µg/lane). This demonstrates the FGD6 antibody detected the FGD6 protein (arrow).