

Datasheet for ABIN952317
anti-FGL1 antibody (C-Term)

2 Images

[Go to Product page](#)

Overview

Quantity:	0.4 mL
Target:	FGL1
Binding Specificity:	AA 225-256, C-Term
Reactivity:	Human
Host:	Rabbit
Clonality:	Polyclonal
Conjugate:	This FGL1 antibody is un-conjugated
Application:	Western Blotting (WB), Immunohistochemistry (Paraffin-embedded Sections) (IHC (p)), Enzyme Immunoassay (EIA)

Product Details

Immunogen:	KLH conjugated synthetic peptide from the C-terminal region (between 225-256 aa) of human FGL1.
Isotype:	Ig Fraction
Specificity:	This antibody detects Human FGL1 at C-terminal region.
Cross-Reactivity (Details):	Species reactivity (tested):Human
Purification:	Purified through a protein A column; followed by peptide affinity purification.

Target Details

Target:	FGL1
---------	------

Target Details

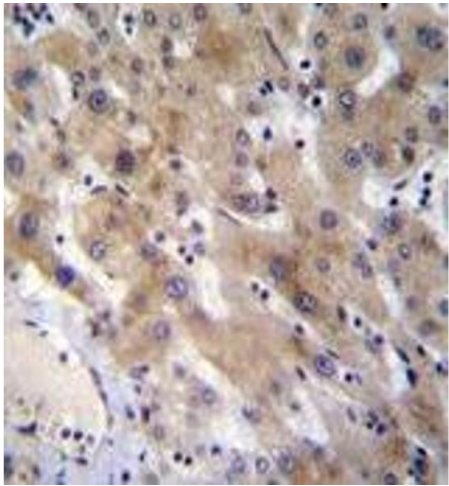
Alternative Name:	FGL1 (FGL1 Products)
Background:	Fibrinogen-like 1 is a member of a fibrinogen family. FGL1 is homologous to the carboxy terminus of the fibrinogen beta- and gamma- subunits which contains the four conserved cysteines of fibrinogens and fibrinogen related proteins. However, FGL1 lacks the platelet-binding site, cross-linking region and a thrombin-sensitive site which are necessary for fibrin clot formation. FGL1 may play a role in the development of hepatocellular carcinomas.Synonyms: Fibrinogen-like protein 1, HFREP1, HP-041, Hepassocin, Hepatocyte-derived fibrinogen-related protein 1, LFIRE1, Liver fibrinogen-related protein
Gene ID:	2267
NCBI Accession:	NP_004458

Application Details

Application Notes:	Optimal working dilution should be determined by the investigator.
Restrictions:	For Research Use only

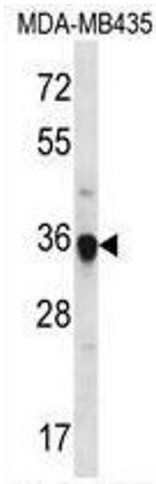
Handling

Format:	Liquid
Concentration:	0.25 mg/mL
Buffer:	PBS with 0.09 % (W/V) Sodium Azide.
Preservative:	Sodium azide
Precaution of Use:	This product contains sodium azide: a POISONOUS AND HAZARDOUS SUBSTANCE which should be handled by trained staff only.
Handling Advice:	Avoid repeated freezing and thawing.
Storage:	4 °C/-20 °C
Storage Comment:	Store the antibody undiluted at 2-8 °C for one month or (in aliquots) at -20 °C for longer.



Immunohistochemistry (Paraffin-embedded Sections)

Image 1. Immunohistochemistry analysis in formalin fixed and paraffin embedded (FFPE) human liver tissue using FGL1 Antibody (C-term) followed by peroxidase conjugation of the secondary antibody and DAB staining. This data demonstrates the use of FGL1 antibody for immunohistochemistry. Clinical relevance has not been evaluated.



Western Blotting

Image 2. Western blot analysis in MDA-MB435 cell line lysates (35ug/lane) using FGL1 Antibody (C-term). This demonstrates the FGL1 antibody detected the FGL1 protein (arrow).