

Datasheet for ABIN952326  
**anti-FBLN3 antibody (N-Term)**[Go to Product page](#)

## 3 Images

## Overview

Quantity:	0.4 mL
Target:	FBLN3
Binding Specificity:	AA 126-156, N-Term
Reactivity:	Human, Mouse
Host:	Rabbit
Clonality:	Polyclonal
Conjugate:	This FBLN3 antibody is un-conjugated
Application:	Western Blotting (WB), Flow Cytometry (FACS), Immunohistochemistry (Paraffin-embedded Sections) (IHC (p)), Enzyme Immunoassay (EIA)

## Product Details

Immunogen:	Synthetic peptide - KLH conjugated - corresponding to the N-terminal region (between 126-156aa) of human Fibulin-3
Isotype:	Ig Fraction
Specificity:	This antibody recognizes Fibulin-3 at N-term.
Cross-Reactivity (Details):	Species reactivity (tested): Human, Mouse
Purification:	Purified through a Protein A column followed by peptide affinity purification

## Target Details

Target:	FBLN3
---------	-------

## Target Details

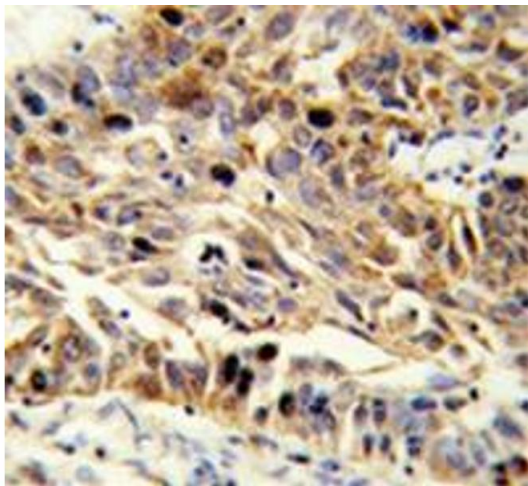
Alternative Name:	Fibulin-3 ( <a href="#">FBLN3 Products</a> )
Background:	EFEMP1 encodes a member of the fibulin family of extracellular matrix glycoproteins. Like all members of this family, Fibulin-3 contains tandemly repeated epidermal growth factor-like repeats followed by a C-terminus fibulin-type domain. This gene is upregulated in malignant gliomas and may play a role in the aggressive nature of these tumors.Synonyms: DHRD, DRAD, EFEMP1, EGF-containing fibulin-like extracellular matrix protein 1, Extracellular protein S1-5, FBLN3, FBNL, Fibrillin-like protein, Fibulin 3, MLVT, MTLV, S1-5
Gene ID:	2202
NCBI Accession:	<a href="#">NP_001034437</a>
Pathways:	<a href="#">EGFR Signaling Pathway</a>

## Application Details

Application Notes:	Optimal working dilution should be determined by the investigator.
Restrictions:	For Research Use only

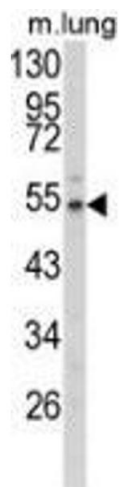
## Handling

Format:	Liquid
Concentration:	0.25 mg/mL
Buffer:	PBS with 0.09 % (W/V) Sodium azide
Preservative:	Sodium azide
Precaution of Use:	This product contains sodium azide: a POISONOUS AND HAZARDOUS SUBSTANCE which should be handled by trained staff only.
Handling Advice:	Avoid repeated freezing and thawing.
Storage:	4 °C/-20 °C
Storage Comment:	Store undiluted at 2-8 °C for one month or (in aliquots) at -20 °C for longer.



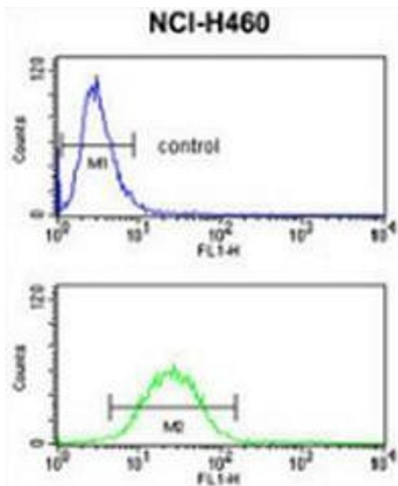
Immunohistochemistry (Paraffin-embedded Sections)

**Image 1.** Immunohistochemistry analysis in human lung carcinoma (Formalin-fixed, Paraffin-embedded) using Fibulin-3 Antibody (N-term), followed by peroxidase-conjugated secondary antibody and DAB staining. This data demonstrates the use of this antibody for IHC. Clinical relevance has not been evaluated.



Western Blotting

**Image 2.** Western blot analysis of Fibulin-3 (arrow) in mouse lung tissue lysates (35ug/lane) using Fibulin-3 Antibody (N-term).



Flow Cytometry

**Image 3.** Flow cytometry analysis of NCI-H460 cells (bottom histogram) compared to a negative control cell (top histogram) using Fibulin-3 Antibody (N-term), followed by FITC-conjugated goat-anti-rabbit secondary antibodies.