



[Go to Product page](#)

Datasheet for ABIN952329  
**anti-FCN3 antibody (C-Term)**

2 Images

Overview

Quantity:	0.4 mL
Target:	FCN3
Binding Specificity:	AA 213-243, C-Term
Reactivity:	Human
Host:	Rabbit
Clonality:	Polyclonal
Application:	Western Blotting (WB), Immunohistochemistry (Paraffin-embedded Sections) (IHC (p)), Enzyme Immunoassay (EIA)

Product Details

Immunogen:	KLH conjugated synthetic peptide between 213-243 amino acids from the C-terminal region of human FCN3
Isotype:	Ig Fraction
Specificity:	This antibody reacts to FCN3.
Cross-Reactivity (Details):	Species reactivity (tested):Human.
Purification:	Affinity chromatography on Protein A

Target Details

Target:	FCN3
Alternative Name:	Ficolin-3 ( <a href="#">FCN3 Products</a> )

## Target Details

---

**Background:** Ficolins are a group of proteins which consist of a collagen-like domain and a fibrinogen-like domain. In human serum, there are two types of ficolins, both of which have lectin activity. The protein encoded by this gene is a thermolabile beta-2-macroglycoprotein found in all human serum and is a member of the ficolin/opsonin p35 lectin family. The protein, which was initially identified based on its reactivity with sera from patients with systemic lupus erythematosus, has been shown to have a calcium-independent lectin activity. The protein can activate the complement pathway in association with MASPs and sMAP, thereby aiding in host defense through the activation of the lectin pathway. Alternative splicing occurs at this locus and two variants, each encoding a distinct isoform, have been identified. Synonyms: Collagen/fibrinogen domain-containing lectin 3 p35, Collagen/fibrinogen domain-containing protein 3, FCN3, FCNH, Ficolin3, HAKA1, Hakata antigen

**Molecular Weight:** 32903 Da

**Gene ID:** 8547

**NCBI Accession:** [NP\\_003656](#)

**Pathways:** [Complement System](#)

## Application Details

---

**Application Notes:** Optimal working dilution should be determined by the investigator.

**Restrictions:** For Research Use only

## Handling

---

**Format:** Liquid

**Concentration:** 0.25 mg/mL

**Buffer:** PBS, 0.09 % (W/V) sodium azide

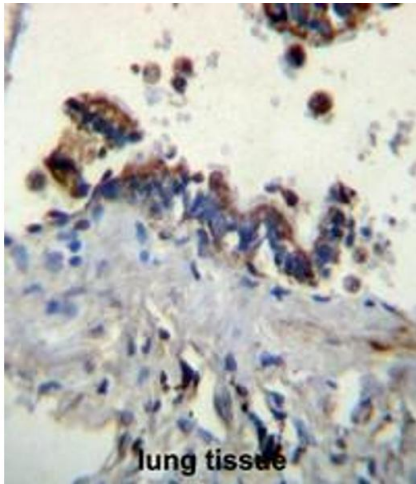
**Preservative:** Sodium azide

**Precaution of Use:** This product contains sodium azide: a POISONOUS AND HAZARDOUS SUBSTANCE which should be handled by trained staff only.

**Handling Advice:** Avoid repeated freezing and thawing.

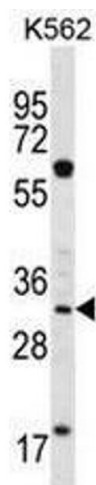
**Storage:** 4 °C/-20 °C

**Storage Comment:** Store the antibody undiluted at 2-8 °C for one month or (in aliquots) at -20 °C for longer.



### Immunohistochemistry (Paraffin-embedded Sections)

**Image 1.** FCN3 Antibody (C-term) immunohistochemistry analysis in formalin fixed and paraffin embedded human lung tissue followed by peroxidase conjugation of the secondary antibody and DAB staining. This data demonstrates the use of FCN3 Antibody (C-term) for immunohistochemistry. Clinical relevance has not been evaluated.



### Western Blotting

**Image 2.** FCN3 Antibody (C-term) western blot analysis in K562 cell line lysates (35µg/lane). This demonstrates the FCN3 antibody detected the FCN3 protein (arrow).