

Datasheet for ABIN952343  
**anti-FLVCR2 antibody (C-Term)**[Go to Product page](#)

## 1 Image

## Overview

Quantity:	0.4 mL
Target:	FLVCR2
Binding Specificity:	AA 485-515, C-Term
Reactivity:	Human
Host:	Rabbit
Clonality:	Polyclonal
Conjugate:	This FLVCR2 antibody is un-conjugated
Application:	Western Blotting (WB), Enzyme Immunoassay (EIA)

## Product Details

Immunogen:	KLH conjugated synthetic peptide between 485~515 amino acids from the C-terminal region of Human FLVC2. Genename: FLVCR2
Isotype:	Ig Fraction
Specificity:	This antibody recognizes Human FLVC2 (C-term).
Purification:	Affinity Chromatography on Protein A

## Target Details

Target:	FLVCR2
Abstract:	<a href="#">FLVCR2 Products</a>
Background:	The FLVCR2 gene encodes a transmembrane protein that belongs to the major facilitator

## Target Details

superfamily of secondary carriers that transport small solutes in response to chemiosmotic ion gradients, such as calcium. Synonyms: C14orf58, CCT, Calcium-chelate transporter, FLVCR2, Feline leukemia virus subgroup C receptor-related protein 2

Molecular Weight: 57241 Da

Gene ID: 55640

NCBI Accession: [NP\\_001182212](#)

## Application Details

Application Notes: Optimal working dilution should be determined by the investigator.

Restrictions: For Research Use only

## Handling

Format: Liquid

Concentration: 0.25 mg/mL

Buffer: PBS containing 0.09 % (W/V) Sodium Azide as preservative

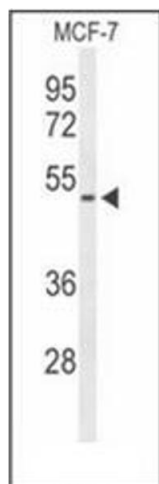
Preservative: Sodium azide

Precaution of Use: This product contains sodium azide: a POISONOUS AND HAZARDOUS SUBSTANCE which should be handled by trained staff only.

Handling Advice: Avoid repeated freezing and thawing.

Storage: 4 °C/-20 °C

Storage Comment: Store undiluted at 2-8 °C for one month or (in aliquots) at -20 °C for longer.



#### Western Blotting

**Image 1.** Western blot analysis of FLVC2 Antibody (C-term) in MCF-7 cell line lysates (35ug/lane). FLVC2 (arrow) was detected using the purified Pab.