

Datasheet for ABIN952358

**anti-FOSL2 antibody (Middle Region)**[Go to Product page](#)**2** Images

## Overview

Quantity:	0.4 mL
Target:	FOSL2
Binding Specificity:	AA 95-122, Middle Region
Reactivity:	Human, Hamster
Host:	Rabbit
Clonality:	Polyclonal
Conjugate:	This FOSL2 antibody is un-conjugated
Application:	Western Blotting (WB), Immunohistochemistry (Paraffin-embedded Sections) (IHC (p)), Enzyme Immunoassay (EIA)

## Product Details

Immunogen:	KLH conjugated synthetic peptide between 95-122 amino acids from the Central region of Human Fos-related antigen 2 Genename: FOSL2
Isotype:	Ig Fraction
Specificity:	This antibody recognizes Human and Hamster Fos-related antigen 2 (Center).
Purification:	Protein A column, followed by peptide affinity purification

## Target Details

Target:	FOSL2
Alternative Name:	Fos-Related Antigen 2 ( <a href="#">FOSL2 Products</a> )

## Target Details

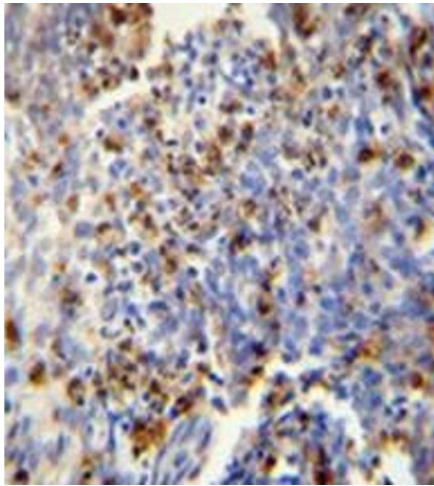
Background:	The Fos gene family consists of 4 members: FOS, FOSB, FOSL1, and FOSL2. These genes encode leucine zipper proteins that can dimerize with proteins of the JUN family, thereby forming the transcription factor complex AP-1. As such, the FOS proteins have been implicated as regulators of cell proliferation, differentiation, and transformation.Synonyms: FOSL2, FRA-2, FRA2
Molecular Weight:	35193 Da
Gene ID:	2355
NCBI Accession:	<a href="#">NP_005244</a>
Pathways:	<a href="#">Feeding Behaviour</a> , <a href="#">Photoperiodism</a>

## Application Details

Application Notes:	Optimal working dilution should be determined by the investigator.
Restrictions:	For Research Use only

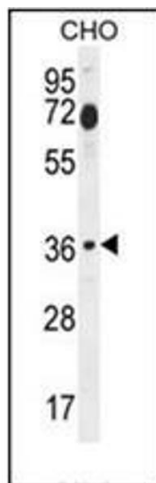
## Handling

Format:	Liquid
Concentration:	0.25 mg/mL
Buffer:	PBS containing 0.09 % (W/V) Sodium Azide as preservative
Preservative:	Sodium azide
Precaution of Use:	This product contains sodium azide: a POISONOUS AND HAZARDOUS SUBSTANCE which should be handled by trained staff only.
Handling Advice:	Avoid repeated freezing and thawing.
Storage:	4 °C/-20 °C
Storage Comment:	Store undiluted at 2-8 °C for one month or (in aliquots) at -20 °C for longer.



#### Immunohistochemistry (Paraffin-embedded Sections)

**Image 1.** Immunohistochemistry analysis in formalin fixed and paraffin embedded human lung carcinoma reacted with FOSL2 Antibody (Center) Cat.-No AP51699PU-N followed by peroxidase conjugation of the secondary antibody and DAB staining.



#### Western Blotting

**Image 2.** Western blot analysis of FOSL2 Antibody (Center) Cat.-No AP51699PU-N in CHO cell line lysates (35ug/lane). This demonstrates the FOSL2 antibody detected the FOSL2 protein (arrow).