

Datasheet for ABIN952367

anti-FOXE3 antibody (Middle Region)[Go to Product page](#)**1** Image

Overview

Quantity:	0.4 mL
Target:	FOXE3
Binding Specificity:	AA 94-122, Middle Region
Reactivity:	Human
Host:	Rabbit
Clonality:	Polyclonal
Conjugate:	This FOXE3 antibody is un-conjugated
Application:	Western Blotting (WB), Enzyme Immunoassay (EIA)

Product Details

Immunogen:	KLH conjugated synthetic peptide between 94-122 amino acids from the Central region of Human FOXE3 / FKHL12
Isotype:	Ig Fraction
Specificity:	This antibody recognizes Human FOXE3 / FKHL12 (Center).
Purification:	Protein A column, followed by peptide affinity purification

Target Details

Target:	FOXE3
Alternative Name:	FOXE3 / FKHL12 (FOXE3 Products)
Background:	This intronless gene belongs to the forkhead family of transcription factors, which is

Target Details

characterized by a distinct forkhead domain. The protein encoded functions as a lens-specific transcription factor and plays an important role in vertebrate lens formation. Mutations in this gene are associated with anterior segment mesenchymal dysgenesis and congenital primary aphakia.Synonyms: FREAC8, Forkhead box protein E3, Forkhead-related protein FKHL12, Forkhead-related transcription factor 8

Molecular Weight: 33234 Da

Gene ID: 2301

NCBI Accession: [NP_036318](#)

Application Details

Application Notes: Optimal working dilution should be determined by the investigator.

Restrictions: For Research Use only

Handling

Format: Liquid

Concentration: 0.25 mg/mL

Buffer: PBS containing 0.09 % (W/V) Sodium Azide as preservative

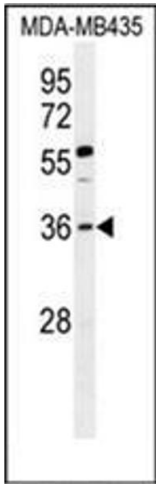
Preservative: Sodium azide

Precaution of Use: This product contains sodium azide: a POISONOUS AND HAZARDOUS SUBSTANCE which should be handled by trained staff only.

Handling Advice: Avoid repeated freezing and thawing.

Storage: 4 °C/-20 °C

Storage Comment: Store undiluted at 2-8 °C for one month or (in aliquots) at -20 °C for longer.



Western Blotting

Image 1. Western blot analysis of FOXE3 / FKHL12 Antibody (Center) in MDA-MB435 cell line lysates (35ug/lane). This demonstrates the FOXE3 antibody detected the FOXE3 protein (arrow).