

Datasheet for ABIN952368  
**anti-FOXG1 antibody (Middle Region)**[Go to Product page](#)

## 2 Images

## Overview

Quantity:	0.4 mL
Target:	FOXG1
Binding Specificity:	AA 231-261, Middle Region
Reactivity:	Human, Mouse
Host:	Rabbit
Clonality:	Polyclonal
Conjugate:	This FOXG1 antibody is un-conjugated
Application:	Western Blotting (WB), Flow Cytometry (FACS), Enzyme Immunoassay (EIA)

## Product Details

Immunogen:	KLH conjugated synthetic peptide between 231~261 amino acids from the Central region of human FOXG1.
Isotype:	Ig Fraction
Specificity:	This antibody recognizes Human and Mouse FOXG1 (Center).
Purification:	Protein A column, followed by peptide affinity purification

## Target Details

Target:	FOXG1
Alternative Name:	FOXG1 ( <a href="#">FOXG1 Products</a> )
Background:	This gene belongs to the forkhead family of transcription factors which is characterized by a

## Target Details

distinct forkhead domain. The specific function of this gene has not yet been determined, however, it may play a role in the development of the brain and telencephalon. Synonyms: Brain factor 1, Brain factor 2, FKHL1, FKHL2, FKHL3, FKHL4, FOXG1A, FOXG1B, FOXG1C, Forkhead box protein G1, Forkhead-related protein FKHL, HFK1, HFK2, HFK3

Molecular Weight: 52352 Da

Gene ID: 2290

NCBI Accession: [NP\\_005240](#)

## Application Details

Application Notes: Optimal working dilution should be determined by the investigator.

Restrictions: For Research Use only

## Handling

Format: Liquid

Concentration: 0.25 mg/mL

Buffer: PBS containing 0.09 % (W/V) Sodium Azide as preservative

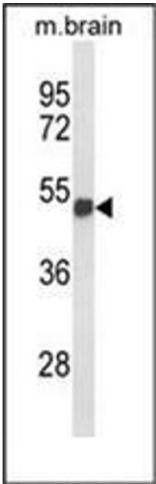
Preservative: Sodium azide

Precaution of Use: This product contains sodium azide: a POISONOUS AND HAZARDOUS SUBSTANCE which should be handled by trained staff only.

Handling Advice: Avoid repeated freezing and thawing.

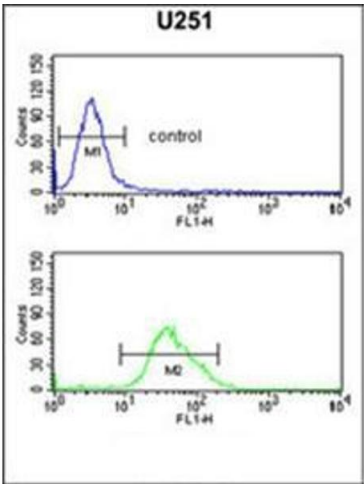
Storage: 4 °C/-20 °C

Storage Comment: Store undiluted at 2-8 °C for one month or (in aliquots) at -20 °C for longer.



### Western Blotting

**Image 1.** Western blot analysis of FOXG1 Antibody (Center) in mouse brain tissue lysates (35ug/lane). FOXG1 (arrow) was detected using the purified Pab.



### Flow Cytometry

**Image 2.** Flow cytometric analysis of U251 cells using FOXG1 Antibody (Center) Cat.-No AP51708PU-N (bottom histogram) compared to a negative control cell (top histogram). FITC-conjugated goat-anti-rabbit secondary antibodies were used for the analysis.