

Datasheet for ABIN952371  
**anti-FOXI3 antibody (Middle Region)**

## 2 Images

[Go to Product page](#)

## Overview

Quantity:	0.4 mL
Target:	FOXI3
Binding Specificity:	AA 164-194, Middle Region
Reactivity:	Human
Host:	Rabbit
Clonality:	Polyclonal
Conjugate:	This FOXI3 antibody is un-conjugated
Application:	Western Blotting (WB), Flow Cytometry (FACS), Enzyme Immunoassay (EIA)

## Product Details

Immunogen:	KLH conjugated synthetic peptide between 164-194 amino acids from the Central region of Human FOXI3
Isotype:	Ig Fraction
Specificity:	This antibody recognizes Human FOXI3 (Center).
Purification:	Protein A column, followed by peptide affinity purification

## Target Details

Target:	FOXI3
Alternative Name:	FOXI3 ( <a href="#">FOXI3 Products</a> )
Background:	Possible transcriptional factor (By similarity).Synonyms: Forkhead box protein I3

## Target Details

Molecular Weight:	43326 Da
Gene ID:	344167
NCBI Accession:	<a href="#">NP_001129121</a>

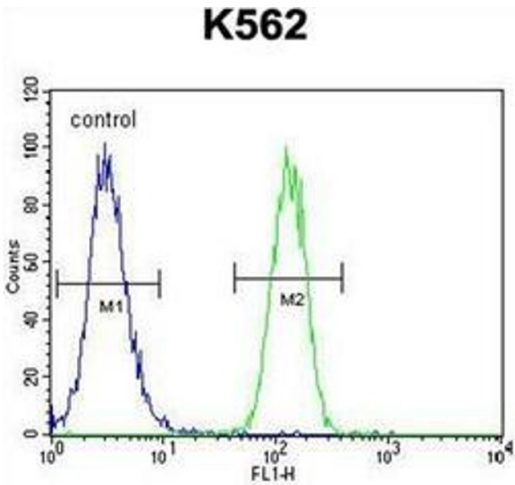
## Application Details

Application Notes:	Optimal working dilution should be determined by the investigator.
Restrictions:	For Research Use only

## Handling

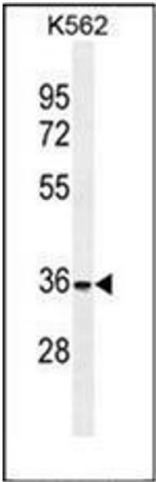
Format:	Liquid
Concentration:	0.25 mg/mL
Buffer:	PBS containing 0.09 % (W/V) Sodium Azide as preservative
Preservative:	Sodium azide
Precaution of Use:	This product contains sodium azide: a POISONOUS AND HAZARDOUS SUBSTANCE which should be handled by trained staff only.
Handling Advice:	Avoid repeated freezing and thawing.
Storage:	4 °C/-20 °C
Storage Comment:	Store undiluted at 2-8 °C for one month or (in aliquots) at -20 °C for longer.

## Images



### Flow Cytometry

**Image 1.** Flow cytometric analysis of K562 cells using FOXI3 Antibody (Center) Cat.-No AP51711PU-N (right histogram) compared to a negative control cell (left histogram). FITC-conjugated goat-anti-rabbit secondary antibodies were used for the analysis.



Western Blotting

**Image 2.** Western blot analysis of FOXI3 Antibody (Center) in K562 cell line lysates (35ug/lane). This demonstrates the FOXI3 antibody detected the FOXI3 protein (arrow).