

Datasheet for ABIN952374

**anti-FOXL1 antibody (Middle Region)**[Go to Product page](#)**2** Images

## Overview

Quantity:	0.4 mL
Target:	FOXL1
Binding Specificity:	AA 99-129, Middle Region
Reactivity:	Human, Mouse
Host:	Rabbit
Clonality:	Polyclonal
Conjugate:	This FOXL1 antibody is un-conjugated
Application:	Western Blotting (WB), Enzyme Immunoassay (EIA)

## Product Details

Immunogen:	KLH conjugated synthetic peptide between 99~129 amino acids from the Center region of human FOXL1 / FKHL11
Isotype:	Ig Fraction
Specificity:	This antibody recognizes Human and Mouse FOXL1 / FKHL11 (Center).
Purification:	Protein A column, followed by peptide affinity purification

## Target Details

Target:	FOXL1
Alternative Name:	FOXL1 / FKHL11 ( <a href="#">FOXL1 Products</a> )
Background:	The forkhead domain is a 100-amino acid monomeric DNA binding motif originally identified as

## Target Details

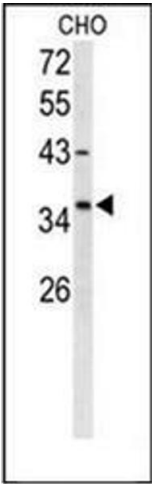
	a region of homology between the Drosophila forkhead protein and rat HNF3. Pierrou et al. (1994) identified 7 human genes containing forkhead domains and designated them forkhead related activators (FREAC) 1 through 7.Synonyms: FREAC7, Forkhead box protein L1, Forkhead-related protein FKHL11, Forkhead-related transcription factor 7
Molecular Weight:	36490 Da
Gene ID:	2300
NCBI Accession:	<a href="#">NP_005241</a>

## Application Details

Application Notes:	Optimal working dilution should be determined by the investigator.
Restrictions:	For Research Use only

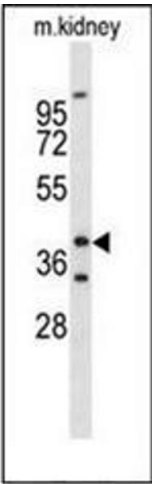
## Handling

Format:	Liquid
Concentration:	0.25 mg/mL
Buffer:	PBS containing 0.09 % (W/V) Sodium Azide as preservative
Preservative:	Sodium azide
Precaution of Use:	This product contains sodium azide: a POISONOUS AND HAZARDOUS SUBSTANCE which should be handled by trained staff only.
Handling Advice:	Avoid repeated freezing and thawing.
Storage:	4 °C/-20 °C
Storage Comment:	Store undiluted at 2-8 °C for one month or (in aliquots) at -20 °C for longer.



**Western Blotting**

**Image 1.** Western blot analysis of FOXL1 / FKHL11 Antibody (Center) in CHO cell line lysates (35ug/lane).FOXL1 (arrow) was detected using the purified Pab;



**Western Blotting**

**Image 2.** Western blot analysis ofFOXL1 / FKHL11 Antibody (Center) in mouse kidney tissue lysates (35ug/lane). FOXL1 (arrow) was detected using the purified Pab.