

Datasheet for ABIN952375
anti-FOXL2 antibody (N-Term)[Go to Product page](#)

2 Images

Overview

Quantity:	0.4 mL
Target:	FOXL2
Binding Specificity:	AA 10-37, N-Term
Reactivity:	Human
Host:	Rabbit
Clonality:	Polyclonal
Conjugate:	This FOXL2 antibody is un-conjugated
Application:	Western Blotting (WB), Flow Cytometry (FACS), Enzyme Immunoassay (EIA)

Product Details

Immunogen:	KLH conjugated synthetic peptide between 10-37 amino acids from the N-terminal region of human FOXL2
Isotype:	Ig Fraction
Specificity:	This antibody recognizes Human FOXL2 (N-term).
Purification:	Protein A column, followed by peptide affinity purification

Target Details

Target:	FOXL2
Alternative Name:	FOXL2 (FOXL2 Products)
Background:	This gene encodes a forkhead transcription factor. The protein contains a fork-head DNA-

Target Details

binding domain and may play a role in ovarian development and function. Mutations in this gene are a cause of blepharophimosis syndrome and premature ovarian failure 3.Synonyms: Forkhead box protein L2

Molecular Weight: 38772 Da

Gene ID: 668

NCBI Accession: [NP_075555](#)

Pathways: [Nuclear Hormone Receptor Binding, Positive Regulation of Endopeptidase Activity](#)

Application Details

Application Notes: Optimal working dilution should be determined by the investigator.

Restrictions: For Research Use only

Handling

Format: Liquid

Concentration: 0.25 mg/mL

Buffer: PBS containing 0.09 % (W/V) Sodium Azide as preservative

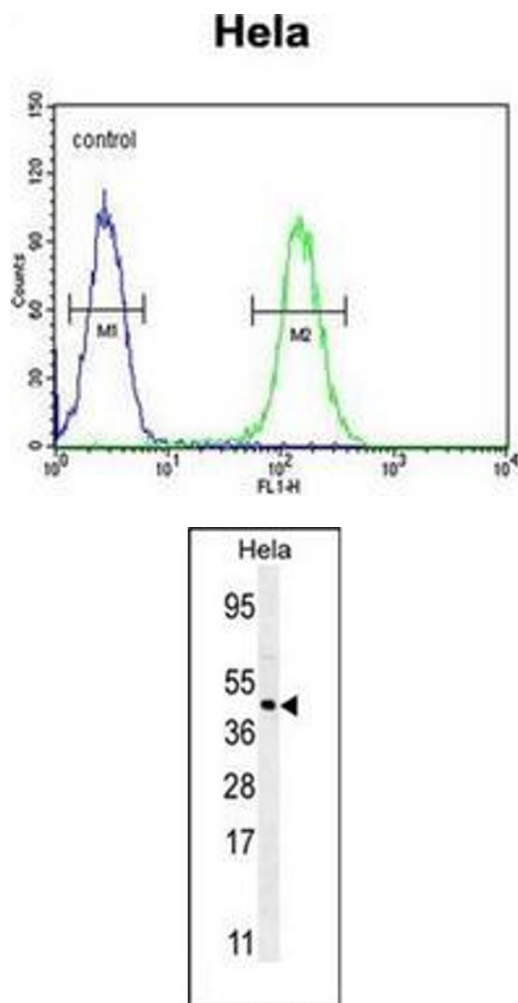
Preservative: Sodium azide

Precaution of Use: This product contains sodium azide: a POISONOUS AND HAZARDOUS SUBSTANCE which should be handled by trained staff only.

Handling Advice: Avoid repeated freezing and thawing.

Storage: 4 °C/-20 °C

Storage Comment: Store undiluted at 2-8 °C for one month or (in aliquots) at -20 °C for longer.



Flow Cytometry

Image 1. Flow cytometric analysis of Hela cells using FOXL2 Antibody (N-term) Cat.-No AP51715PU-N (right histogram) compared to a negative control cell (left histogram). FITC-conjugated goat-anti-rabbit secondary antibodies were used for the analysis.

Western Blotting

Image 2. Western blot analysis of FOXL2 Antibody (N-term) in Hela cell line lysates (35ug/lane). This demonstrates the FOXL2 antibody detected the FOXL2 protein (arrow).