

Datasheet for ABIN952389  
**anti-FRAT2 antibody (C-Term)**

## 3 Images

[Go to Product page](#)

## Overview

Quantity:	0.4 mL
Target:	FRAT2
Binding Specificity:	AA 210-233, C-Term
Reactivity:	Human
Host:	Rabbit
Clonality:	Polyclonal
Application:	Western Blotting (WB), Immunofluorescence (IF), Immunohistochemistry (Paraffin-embedded Sections) (IHC (p)), Enzyme Immunoassay (EIA)

## Product Details

Immunogen:	KLH conjugated synthetic peptide between 210-233 amino acids from the C-terminal region of human FRAT2
Isotype:	Ig Fraction
Specificity:	This antibody recognizes Human FRAT2 (C-term).
Purification:	Protein A column, followed by peptide affinity purification

## Target Details

Target:	FRAT2
Alternative Name:	FRAT2 ( <a href="#">FRAT2 Products</a> )
Background:	The protein encoded by this intronless gene belongs to the GSK-3-binding protein family. Studies show that this protein plays a role as a positive regulator of the WNT signaling

## Target Details

	pathway. It may be upregulated in tumor progression.Synonyms: GSK-3-binding protein Frat-2
Molecular Weight:	24051 Da
Gene ID:	23401
NCBI Accession:	<a href="#">NP_036215</a>

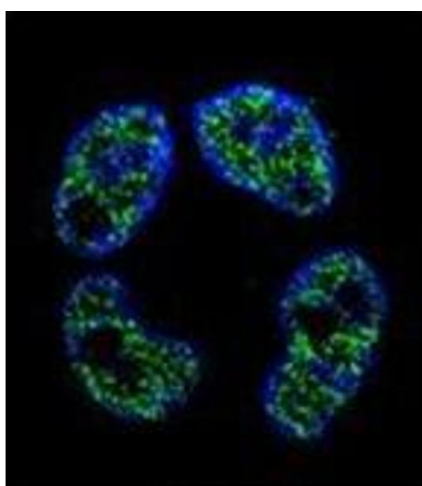
## Application Details

Application Notes:	Optimal working dilution should be determined by the investigator.
Restrictions:	For Research Use only

## Handling

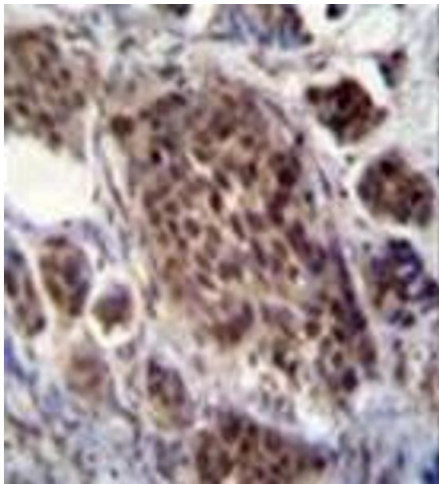
Format:	Liquid
Concentration:	0.25 mg/mL
Buffer:	PBS containing 0.09 % (W/V) Sodium Azide as preservative
Preservative:	Sodium azide
Precaution of Use:	This product contains sodium azide: a POISONOUS AND HAZARDOUS SUBSTANCE which should be handled by trained staff only.
Handling Advice:	Avoid repeated freezing and thawing.
Storage:	4 °C/-20 °C
Storage Comment:	Store undiluted at 2-8 °C for one month or (in aliquots) at -20 °C for longer.

## Images



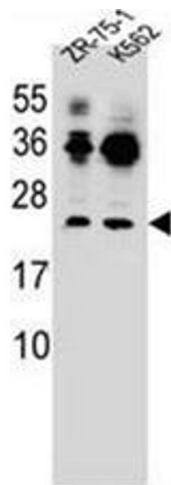
### Immunofluorescence

**Image 1.** Confocal immunofluorescent analysis of FRAT2 Antibody (C-term) Cat.-No AP51723PU-N with ZR-75-1 cell followed by Alexa Fluor 488-conjugated goat anti-rabbit IgG (green). DAPI was used to stain the cell nuclear (blue).



#### Immunohistochemistry (Paraffin-embedded Sections)

**Image 2.** Immunohistochemistry analysis in formalin fixed and paraffin embedded human bladder carcinoma reacted with FRAT2 Antibody (C-term) followed by peroxidase conjugation of the secondary antibody and DAB staining.



#### Western Blotting

**Image 3.** Western blot analysis of FRAT2 Antibody (C-term) in ZR-75-1, K562 cell line lysates (35ug/lane). This demonstrates the FRAT2 antibody detected the FRAT2 protein (arrow).