

Datasheet for ABIN952407
anti-SKOR2 antibody (C-Term)

2 Images

[Go to Product page](#)

Overview

Quantity:	0.4 mL
Target:	SKOR2
Binding Specificity:	AA 877-906, C-Term
Reactivity:	Human
Host:	Rabbit
Clonality:	Polyclonal
Conjugate:	This SKOR2 antibody is un-conjugated
Application:	Western Blotting (WB), Immunohistochemistry (Paraffin-embedded Sections) (IHC (p)), Enzyme Immunoassay (EIA)

Product Details

Immunogen:	KLH conjugated synthetic peptide between 877-906 amino acids from the C-terminal region of human FUSSEL18 Genename: SKOR2
Isotype:	Ig Fraction
Specificity:	This antibody recognizes Human FUSSEL18 (C-term).
Purification:	Protein A column, followed by peptide affinity purification

Target Details

Target:	SKOR2
Alternative Name:	FUSSEL18 (SKOR2 Products)

Target Details

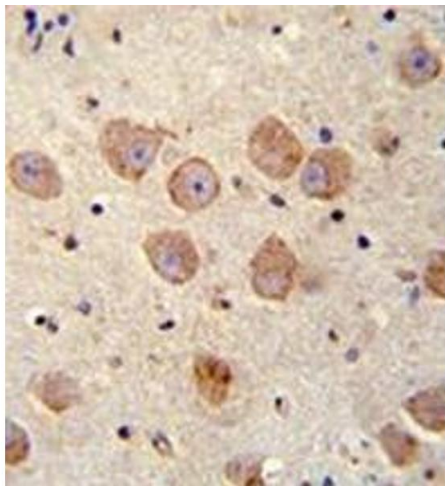
Background:	SKOR2 exhibits transcriptional repressor activity (By similarity) and acts as a TGF-beta antagonist in the nervous system.Synonyms: CORL2, SKI family transcriptional corepressor 2, SKOR2
Molecular Weight:	104235 Da
Gene ID:	100508378
NCBI Accession:	XP_001715271

Application Details

Application Notes:	Optimal working dilution should be determined by the investigator.
Restrictions:	For Research Use only

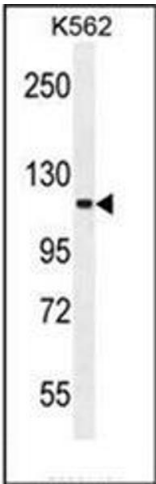
Handling

Format:	Liquid
Concentration:	0.25 mg/mL
Buffer:	PBS containing 0.09 % (W/V) Sodium Azide as preservative
Preservative:	Sodium azide
Precaution of Use:	This product contains sodium azide: a POISONOUS AND HAZARDOUS SUBSTANCE which should be handled by trained staff only.
Handling Advice:	Avoid repeated freezing and thawing.
Storage:	4 °C/-20 °C
Storage Comment:	Store undiluted at 2-8 °C for one month or (in aliquots) at -20 °C for longer.



Immunohistochemistry (Paraffin-embedded Sections)

Image 1. Immunohistochemistry analysis in formalin fixed and paraffin embedded human brain tissue reacted with FUSSEL18 Antibody (C-term) followed by peroxidase conjugation of the secondary antibody and DAB staining.



Western Blotting

Image 2. Western blot analysis of FUSSEL18 Antibody (C-term) in K562 cell line lysates (35ug/lane). This demonstrates the FUSSEL18 antibody detected the FUSSEL18 protein (arrow).