

Datasheet for ABIN952412
anti-GNa14 antibody (N-Term)

2 Images

[Go to Product page](#)

Overview

Quantity:	0.4 mL
Target:	GNa14
Binding Specificity:	AA 11-41, N-Term
Reactivity:	Human
Host:	Rabbit
Clonality:	Polyclonal
Application:	Western Blotting (WB), Immunohistochemistry (Paraffin-embedded Sections) (IHC (p)), Enzyme Immunoassay (EIA)

Product Details

Immunogen:	KLH conjugated synthetic peptide between 11-41 amino acids from the N-terminal region of Human G protein alpha 14 Genename: GNA14
Isotype:	Ig Fraction
Specificity:	This antibody recognizes Human G protein alpha 14 (N-term).
Purification:	Protein A column, followed by peptide affinity purification

Target Details

Target:	GNa14
Alternative Name:	G Protein alpha 14 (GNa14 Products)
Background:	This gene encodes a member of the guanine nucleotide-binding, or G protein family. G proteins are heterotrimers consisting of alpha, beta and gamma subunits. The encoded protein is a

Target Details

member of the alpha family of G proteins, more specifically the alpha q subfamily of G proteins. The encoded protein may play a role in pertussis-toxin resistant activation of phospholipase C-beta and its downstream effectors. Synonyms: G alpha-14, GNA14, Guanine nucleotide-binding protein subunit alpha-14

Molecular Weight: 41571 Da

Gene ID: 9630

NCBI Accession: [NP_004288](#)

Pathways: [G-protein mediated Events](#)

Application Details

Application Notes: Optimal working dilution should be determined by the investigator.

Restrictions: For Research Use only

Handling

Format: Liquid

Concentration: 0.25 mg/mL

Buffer: PBS containing 0.09 % (W/V) Sodium Azide as preservative

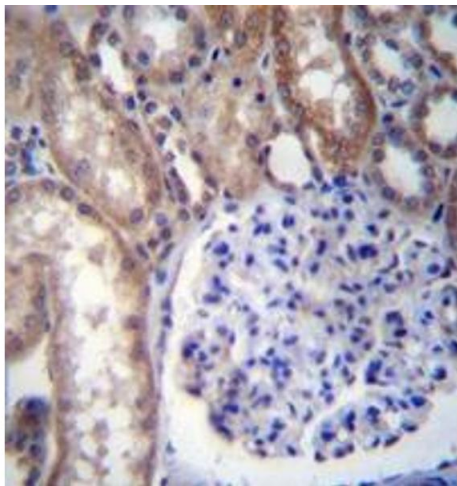
Preservative: Sodium azide

Precaution of Use: This product contains sodium azide: a POISONOUS AND HAZARDOUS SUBSTANCE which should be handled by trained staff only.

Handling Advice: Avoid repeated freezing and thawing.

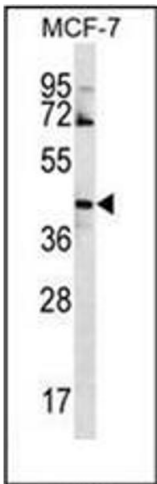
Storage: 4 °C/-20 °C

Storage Comment: Store undiluted at 2-8 °C for one month or (in aliquots) at -20 °C for longer.



Immunohistochemistry (Paraffin-embedded Sections)

Image 1. Immunohistochemistry analysis in formalin fixed and paraffin embedded human kidney tissue reacted with GNA14 Antibody (N-term) followed by peroxidase conjugation of the secondary antibody and DAB staining.



Western Blotting

Image 2. Western blot analysis of GNA14 Antibody (N-term) in MCF-7 cell line lysates (35ug/lane). This demonstrates the GNA14 antibody detected the GNA14 protein (arrow).