

Datasheet for ABIN952418
anti-GAB3 antibody (N-Term)[Go to Product page](#)

1 Image

Overview

Quantity:	0.4 mL
Target:	GAB3
Binding Specificity:	AA 29-58, N-Term
Reactivity:	Human
Host:	Rabbit
Clonality:	Polyclonal
Conjugate:	This GAB3 antibody is un-conjugated
Application:	Western Blotting (WB), Enzyme Immunoassay (EIA)

Product Details

Immunogen:	KLH conjugated synthetic peptide between 29-58 amino acids from the N-terminal region of Human GAB3
Isotype:	Ig Fraction
Specificity:	This antibody recognizes Human GAB3 (N-term).
Purification:	Protein A column, followed by peptide affinity purification

Target Details

Target:	GAB3
Alternative Name:	GAB3 (GAB3 Products)
Background:	GAB3 is a member of the GRB2-associated binding protein gene family. These proteins are

Target Details

scaffolding/docking proteins that are involved in several growth factor and cytokine signaling pathways, and they contain a pleckstrin homology domain, and bind SHP2 tyrosine phosphatase and GRB2 adapter protein. The protein encoded by this gene facilitates macrophage differentiation. Two transcript variants encoding different isoforms have been found for this gene. Synonyms: GRB2-associated binder 3, GRB2-associated-binding protein 3, Growth factor receptor bound protein 2-associated protein 3

Molecular Weight: 65589 Da

Gene ID: 139716

NCBI Accession: [NP_001075042](#)

Application Details

Application Notes: Optimal working dilution should be determined by the investigator.

Restrictions: For Research Use only

Handling

Format: Liquid

Concentration: 0.25 mg/mL

Buffer: PBS containing 0.09 % (W/V) Sodium Azide as preservative

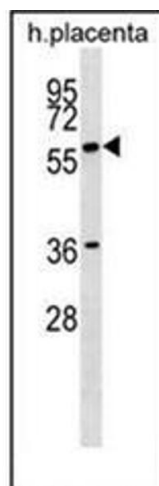
Preservative: Sodium azide

Precaution of Use: This product contains sodium azide: a POISONOUS AND HAZARDOUS SUBSTANCE which should be handled by trained staff only.

Handling Advice: Avoid repeated freezing and thawing.

Storage: 4 °C/-20 °C

Storage Comment: Store undiluted at 2-8 °C for one month or (in aliquots) at -20 °C for longer.



Western Blotting

Image 1. Western blot analysis of GAB3 Antibody (N-term) in human placenta tissue lysates (35ug/lane). This demonstrates the GAB3 antibody detected the GAB3 protein (arrow).