



[Go to Product page](#)

Datasheet for ABIN952420

anti-GABARAPL2 antibody (N-Term)

2 Images

Overview

Quantity:	0.4 mL
Target:	GABARAPL2
Binding Specificity:	AA 1-30, N-Term
Reactivity:	Human, Mouse
Host:	Rabbit
Clonality:	Polyclonal
Conjugate:	This GABARAPL2 antibody is un-conjugated
Application:	Western Blotting (WB), Enzyme Immunoassay (EIA)

Product Details

Immunogen:	KLH conjugated synthetic peptide between 1-30 amino acids from the N-terminal region of human GABARAPL2
Isotype:	Ig Fraction
Specificity:	This antibody recognizes Human and Mouse GABARAPL2 (N-term).
Purification:	Protein A column, followed by peptide affinity purification

Target Details

Target:	GABARAPL2
Alternative Name:	GABARAPL2 (GABARAPL2 Products)
Background:	Involved in intra-Golgi traffic. Modulates intra-Golgi transport through coupling between NSF

Target Details

activity and SNAREs activation. It first stimulates the ATPase activity of NSF which in turn stimulates the association with GOSR1 (By similarity).Synonyms: FLC3A, GABA A receptor-associated protein-like 2, GATE16, GEF2, Gamma-aminobutyric acid receptor-associated protein-like 2, Ganglioside expression factor 2, General protein transport factor p16, Golgi-associated ATPase enhancer of 16 kDa, MAP1 light chain 3-related protein

Molecular Weight: 13667 Da

Gene ID: 11345

NCBI Accession: [NP_009216](#)

Pathways: [Autophagy](#)

Application Details

Application Notes: Optimal working dilution should be determined by the investigator.

Restrictions: For Research Use only

Handling

Format: Liquid

Concentration: 0.25 mg/mL

Buffer: PBS containing 0.09 % (W/V) Sodium Azide as preservative

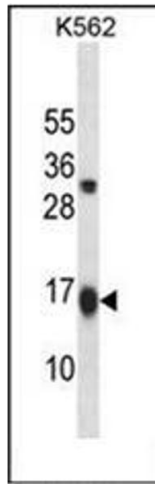
Preservative: Sodium azide

Precaution of Use: This product contains sodium azide: a POISONOUS AND HAZARDOUS SUBSTANCE which should be handled by trained staff only.

Handling Advice: Avoid repeated freezing and thawing.

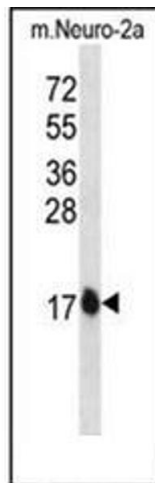
Storage: 4 °C/-20 °C

Storage Comment: Store undiluted at 2-8 °C for one month or (in aliquots) at -20 °C for longer.



Western Blotting

Image 1. Western blot analysis of GABARAPL2 Antibody (N-term) in K562 cell line lysates (35ug/lane).



Western Blotting

Image 2. Western blot analysis of GABARAPL2 Antibody (N-term) in mouse Neuro-2a cell line lysates (35ug/lane).