

Datasheet for ABIN952427

anti-G Antigen 13 antibody (N-Term)

3 Images



[Go to Product page](#)

Overview

Quantity:	0.4 mL
Target:	G Antigen 13 (GAGE13)
Binding Specificity:	AA 1-30, N-Term
Reactivity:	Human
Host:	Rabbit
Clonality:	Polyclonal
Conjugate:	This G Antigen 13 antibody is un-conjugated
Application:	Western Blotting (WB), Flow Cytometry (FACS), Immunohistochemistry (Paraffin-embedded Sections) (IHC (p)), Enzyme Immunoassay (EIA)

Product Details

Immunogen:	KLH conjugated synthetic peptide between 1-30 amino acids from the N-terminal region of human GAGE13
Isotype:	Ig Fraction
Purification:	Protein A column, followed by peptide affinity purification

Target Details

Target:	G Antigen 13 (GAGE13)
Alternative Name:	GAGE13 (GAGE13 Products)
Background:	Synonyms: G antigen 13, GAGE12A

Target Details

Molecular Weight: 12873 Da

Gene ID: 9606

Application Details

Application Notes: Optimal working dilution should be determined by the investigator.

Restrictions: For Research Use only

Handling

Format: Liquid

Concentration: 0.25 mg/mL

Buffer: PBS containing 0.09 % (W/V) Sodium Azide as preservative

Preservative: Sodium azide

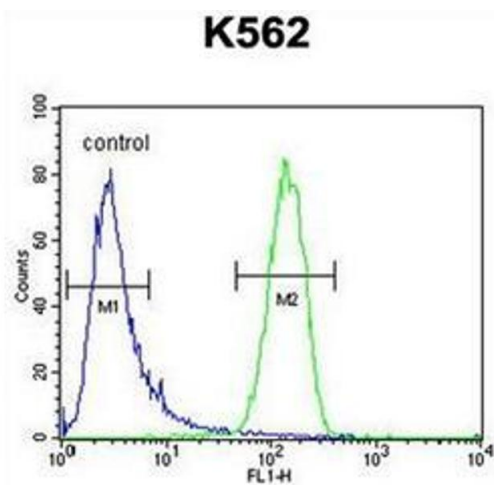
Precaution of Use: This product contains sodium azide: a POISONOUS AND HAZARDOUS SUBSTANCE which should be handled by trained staff only.

Handling Advice: Avoid repeated freezing and thawing.

Storage: 4 °C/-20 °C

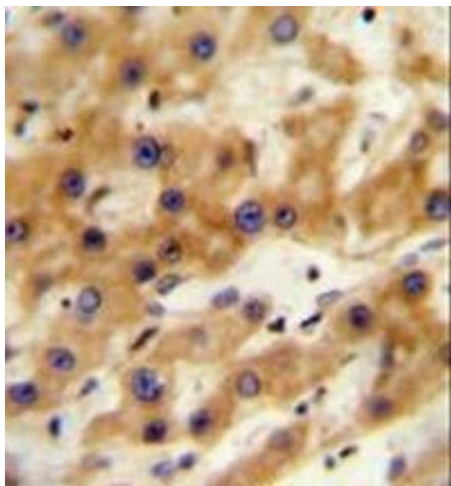
Storage Comment: Store undiluted at 2-8 °C for one month or (in aliquots) at -20 °C for longer.

Images



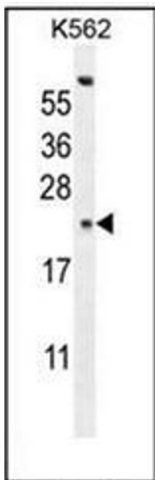
Flow Cytometry

Image 1. Flow cytometric analysis of K562 cells using GAGE13 Antibody (N-term) Cat.-No AP51758PU-N (right histogram) compared to a negative control cell (left histogram). FITC-conjugated goat-anti-rabbit secondary antibodies were used for the analysis.



Immunohistochemistry (Paraffin-embedded Sections)

Image 2. Immunohistochemistry analysis in formalin fixed and paraffin embedded human hepatocarcinoma reacted with GAGE13 Antibody (N-term) followed by peroxidase conjugation of the secondary antibody and DAB staining.



Western Blotting

Image 3. Western blot analysis of GAGE13 Antibody (N-term) in K562 cell line lysates (35ug/lane). This demonstrates the GAGE13 antibody detected the GAGE13 protein (arrow).