

Datasheet for ABIN952428  
**anti-G Antigen 7 antibody (C-Term)**

## 3 Images

[Go to Product page](#)

## Overview

Quantity:	0.4 mL
Target:	G Antigen 7 (GAGE7)
Binding Specificity:	AA 88-117, C-Term
Reactivity:	Human
Host:	Rabbit
Clonality:	Polyclonal
Conjugate:	This G Antigen 7 antibody is un-conjugated
Application:	Western Blotting (WB), Flow Cytometry (FACS), Immunohistochemistry (Paraffin-embedded Sections) (IHC (p)), Enzyme Immunoassay (EIA)

## Product Details

Immunogen:	KLH conjugated synthetic peptide between 88~117 amino acids from the C-terminal region of human GAGE7
Isotype:	Ig Fraction
Specificity:	This antibody recognizes Human GAGE7 (C-term).
Purification:	Protein A column, followed by peptide affinity purification

## Target Details

Target:	G Antigen 7 (GAGE7)
Alternative Name:	GAGE7 ( <a href="#">GAGE7 Products</a> )

## Target Details

Background:	Synonyms: Cancer/testis antigen 4.7, G antigen 7, GAGE-7, GAGE12I, GAGE7B
Molecular Weight:	12978 Da
Gene ID:	100008586
NCBI Accession:	<a href="#">NP_001091875</a>

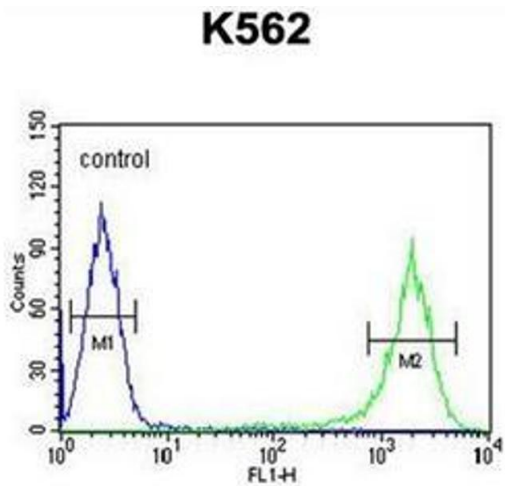
## Application Details

Application Notes:	Optimal working dilution should be determined by the investigator.
Restrictions:	For Research Use only

## Handling

Format:	Liquid
Concentration:	0.25 mg/mL
Buffer:	PBS containing 0.09 % (W/V) Sodium Azide as preservative
Preservative:	Sodium azide
Precaution of Use:	This product contains sodium azide: a POISONOUS AND HAZARDOUS SUBSTANCE which should be handled by trained staff only.
Handling Advice:	Avoid repeated freezing and thawing.
Storage:	4 °C/-20 °C
Storage Comment:	Store undiluted at 2-8 °C for one month or (in aliquots) at -20 °C for longer.

## Images



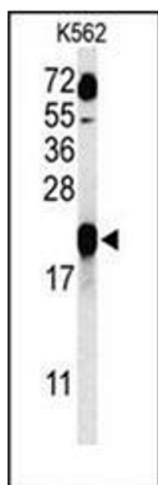
### Flow Cytometry

**Image 1.** Flow cytometric analysis of K562 cells using GAGE7 Antibody (C-term) Cat.-No AP51759PU-N (right histogram) compared to a negative control cell (left histogram). FITC-conjugated goat-anti-rabbit secondary antibodies were used for the analysis.



#### Immunohistochemistry (Paraffin-embedded Sections)

**Image 2.** Immunohistochemistry analysis in formalin fixed and paraffin embedded human prostate carcinoma reacted with GAGE7 Antibody (C-term) followed by peroxidase conjugation of the secondary antibody and DAB staining.



#### Western Blotting

**Image 3.** Western blot analysis of GAGE7 Antibody (C-term) in K562 cell line lysates (35ug/lane). GAGE7 (arrow) was detected using the purified Pab.