

Datasheet for ABIN952461
anti-GAS1 antibody (N-Term)



[Go to Product page](#)

4 Images

Overview

Quantity:	0.4 mL
Target:	GAS1
Binding Specificity:	AA 102-136, N-Term
Reactivity:	Human
Host:	Rabbit
Clonality:	Polyclonal
Conjugate:	This GAS1 antibody is un-conjugated
Application:	Western Blotting (WB), Immunofluorescence (IF), Immunohistochemistry (Paraffin-embedded Sections) (IHC (p)), Flow Cytometry (FACS), Enzyme Immunoassay (EIA)

Product Details

Immunogen:	KLH conjugated synthetic peptide between 102-136 amino acids from the N-terminal region of human GAS1
Isotype:	Ig Fraction
Specificity:	This antibody recognizes Human and Mouse GAS1 (N-term).
Purification:	Saturated Ammonium Sulfate (SAS) precipitation followed by dialysis against PBS

Target Details

Target:	GAS1
Alternative Name:	GAS1 (GAS1 Products)

Target Details

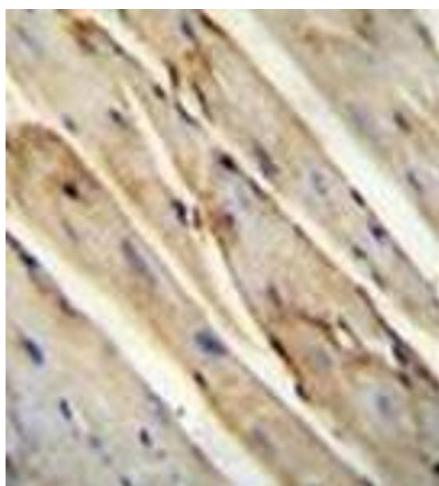
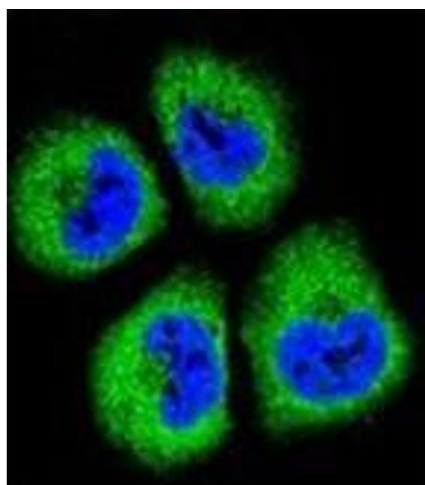
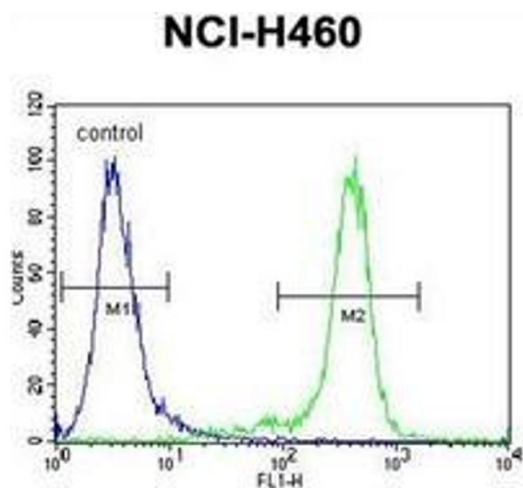
Background:	Growth arrest-specific 1 plays a role in growth suppression. GAS1 blocks entry to S phase and prevents cycling of normal and transformed cells. Gas1 is a putative tumor suppressor gene.Synonyms: GAS-1, Growth arrest-specific protein 1
Molecular Weight:	35693 Da
Gene ID:	2619
NCBI Accession:	NP_002039

Application Details

Application Notes:	Optimal working dilution should be determined by the investigator.
Restrictions:	For Research Use only

Handling

Format:	Liquid
Concentration:	0.25 mg/mL
Buffer:	PBS containing 0.09 % (W/V) Sodium Azide as preservative
Preservative:	Sodium azide
Precaution of Use:	This product contains sodium azide: a POISONOUS AND HAZARDOUS SUBSTANCE which should be handled by trained staff only.
Handling Advice:	Avoid repeated freezing and thawing.
Storage:	4 °C/-20 °C
Storage Comment:	Store undiluted at 2-8 °C for one month or (in aliquots) at -20 °C for longer.



Flow Cytometry

Image 1. Flow cytometric analysis of NCI-H460 cells using GAS1 Antibody (N-term) Cat.-No AP51781PU-N (right histogram) compared to a negative control cell (left histogram). FITC-conjugated goat-anti-rabbit secondary antibodies were used for the analysis.

Immunofluorescence

Image 2. Confocal immunofluorescent analysis of GAS1 Antibody (N-term) Cat.-No AP51781PU-N with NCI-H460 cell followed by Alexa Fluor®488-conjugated Goat anti-Rabbit IgG (green). DAPI was used to stain the cell nuclear (blue).

Immunohistochemistry (Paraffin-embedded Sections)

Image 3. Immunohistochemistry analysis in formalin fixed and paraffin embedded mouse heart tissue reacted with GAS1 Antibody (N-term) followed which was peroxidase conjugated to the secondary antibody and followed by DAB staining.

Please check the [product details page](#) for more images. Overall 4 images are available for ABIN952461.