

Datasheet for ABIN952462
anti-GAS2L1 antibody (C-Term)[Go to Product page](#)

2 Images

Overview

Quantity:	0.4 mL
Target:	GAS2L1
Binding Specificity:	AA 625-654, C-Term
Reactivity:	Human
Host:	Rabbit
Clonality:	Polyclonal
Conjugate:	This GAS2L1 antibody is un-conjugated
Application:	Western Blotting (WB), Flow Cytometry (FACS), Enzyme Immunoassay (EIA)

Product Details

Immunogen:	KLH conjugated synthetic peptide between 625-654 amino acids from the C-terminal region of human GAS2L1
Isotype:	Ig Fraction
Specificity:	This antibody recognizes Human GAS2L1 (C-term).
Purification:	Protein A column, followed by peptide affinity purification

Target Details

Target:	GAS2L1
Alternative Name:	GAS2-Like Protein 1 (GAS2L1 Products)
Background:	The protein encoded by this gene, a member of the GAS2 family, is similar in sequence to the

Target Details

mouse protein Gas2, an actin-associated protein expressed at high levels in growth-arrested cells. Expression of the mouse Gas2 gene is negatively regulated by serum and growth factors. Three transcript variants encoding two different isoforms have been found for this gene. Synonyms: GAR22, GAS2-related protein on chromosome 22, GAS2L1, Growth arrest-specific protein 2-like 1

Molecular Weight: 72717 Da

Gene ID: 10634

NCBI Accession: [NP_006469](#)

Application Details

Application Notes: Optimal working dilution should be determined by the investigator.

Restrictions: For Research Use only

Handling

Format: Liquid

Concentration: 0.25 mg/mL

Buffer: PBS containing 0.09 % (W/V) Sodium Azide as preservative

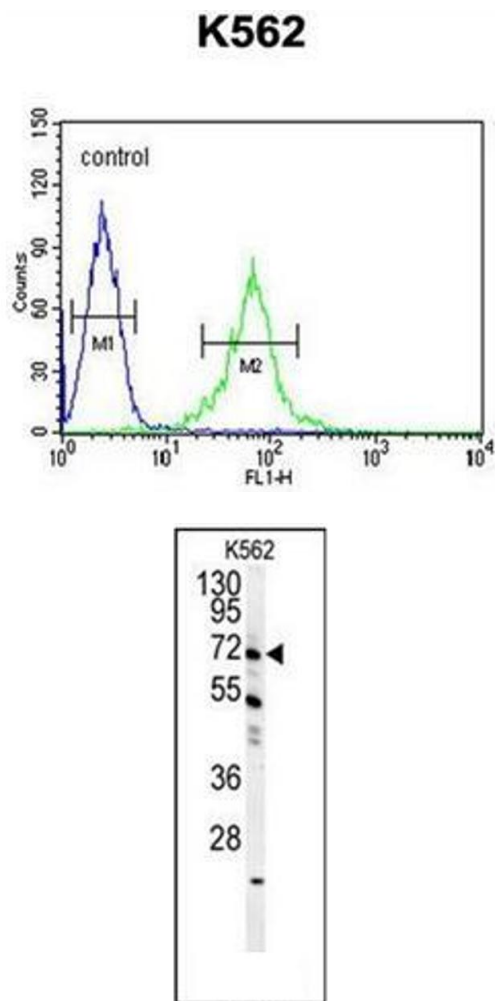
Preservative: Sodium azide

Precaution of Use: This product contains sodium azide: a POISONOUS AND HAZARDOUS SUBSTANCE which should be handled by trained staff only.

Handling Advice: Avoid repeated freezing and thawing.

Storage: 4 °C/-20 °C

Storage Comment: Store undiluted at 2-8 °C for one month or (in aliquots) at -20 °C for longer.



Flow Cytometry

Image 1. Flow cytometric analysis of K562 cells using GAS2L1 Antibody (C-term) Cat-No AP51782PU-N (right histogram) compared to a negative control cell (left histogram).FITC-conjugated goat-anti-rabbit secondary antibodies were used for the analysis.

Western Blotting

Image 2. Western blot analysis of GAS2L1 Antibody (C-term) Cat-No AP51782PU-N in K562 cell line lysates (35ug/lane).This demonstrates the GAS2L1 antibody detected the GAS2L1 protein (arrow).