

Datasheet for ABIN952463  
**anti-GAS2L2 antibody (C-Term)**[Go to Product page](#)

## 2 Images

## Overview

Quantity:	0.4 mL
Target:	GAS2L2
Binding Specificity:	AA 770-799, C-Term
Reactivity:	Human
Host:	Rabbit
Clonality:	Polyclonal
Conjugate:	This GAS2L2 antibody is un-conjugated
Application:	Western Blotting (WB), Immunohistochemistry (Paraffin-embedded Sections) (IHC (p)), Enzyme Immunoassay (EIA)

## Product Details

Immunogen:	KLH conjugated synthetic peptide between 770-799 amino acids from the C-terminal region of human GAS2L2
Isotype:	Ig Fraction
Specificity:	This antibody recognizes Human GAS2L2 (C-term).
Purification:	Protein A column, followed by peptide affinity purification

## Target Details

Target:	GAS2L2
Alternative Name:	GAS2-Like Protein 2 ( <a href="#">GAS2L2 Products</a> )

## Target Details

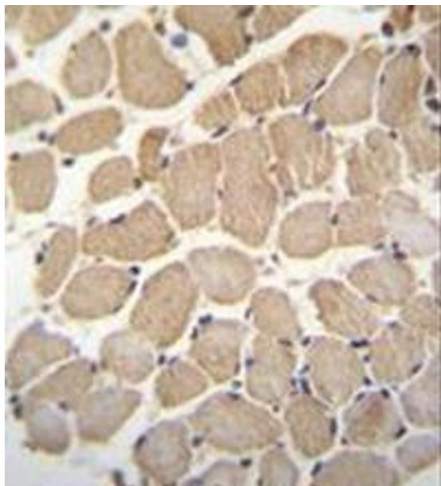
Background:	Seems to be involved in the cross-linking of microtubules and microfilaments.Synonyms: GAR17, GAS2-related protein on chromosome 17, GAS2L2, Growth arrest-specific protein 2-like 2
Molecular Weight:	96520 Da
Gene ID:	246176
NCBI Accession:	<a href="#">NP_644814</a>

## Application Details

Application Notes:	Optimal working dilution should be determined by the investigator.
Restrictions:	For Research Use only

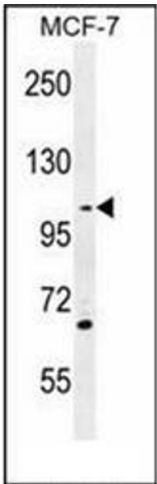
## Handling

Format:	Liquid
Concentration:	0.25 mg/mL
Buffer:	PBS containing 0.09 % (W/V) Sodium Azide as preservative
Preservative:	Sodium azide
Precaution of Use:	This product contains sodium azide: a POISONOUS AND HAZARDOUS SUBSTANCE which should be handled by trained staff only.
Handling Advice:	Avoid repeated freezing and thawing.
Storage:	4 °C/-20 °C
Storage Comment:	Store undiluted at 2-8 °C for one month or (in aliquots) at -20 °C for longer.



**Immunohistochemistry (Paraffin-embedded Sections)**

**Image 1.** Immunohistochemistry analysis in formalin fixed and paraffin embedded human skeletal muscle reacted with GAS2L2 Antibody (C-term) followed by peroxidase conjugation of the secondary antibody and DAB staining.



**Western Blotting**

**Image 2.** Western blot analysis of GAS2L2 Antibody (C-term) Cat.-No AP51783PU-N in MCF-7 cell line lysates (35ug/lane). This demonstrates the GAS2L2 antibody detected the GAS2L2 protein (arrow).