



[Go to Product page](#)

Datasheet for ABIN952464

anti-MLZE antibody (Middle Region)

3 Images

Overview

Quantity:	0.4 mL
Target:	MLZE
Binding Specificity:	AA 221-250, Middle Region
Reactivity:	Human
Host:	Rabbit
Clonality:	Polyclonal
Conjugate:	This MLZE antibody is un-conjugated
Application:	Western Blotting (WB), Flow Cytometry (FACS), Immunohistochemistry (Paraffin-embedded Sections) (IHC (p)), Enzyme Immunoassay (EIA)

Product Details

Immunogen:	KLH conjugated synthetic peptide between 221-250 amino acids from the Central region of Human Gasdermin C. Genename: GSDMC
Isotype:	Ig Fraction
Specificity:	This antibody recognizes Human Gasdermin-C (Center).
Purification:	Protein A column, followed by peptide affinity purification

Target Details

Target:	MLZE
Alternative Name:	Gasdermin C (MLZE Products)

Target Details

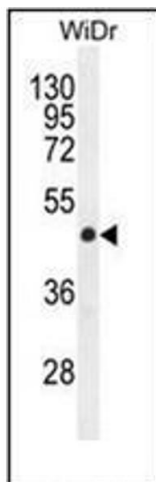
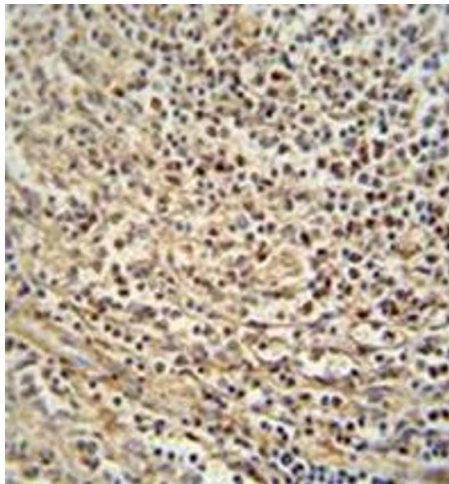
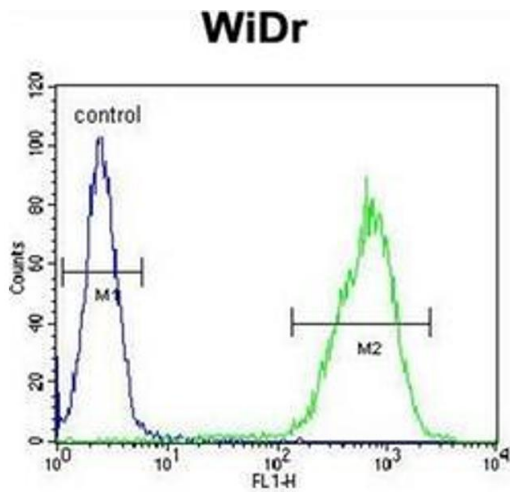
Background:	Synonyms: GSDMC, Gasdermin-C, MLZE, Melanoma-derived leucine zipper-containing extranuclear factor
Molecular Weight:	57692 Da
Gene ID:	56169
NCBI Accession:	NP_113603

Application Details

Application Notes:	Optimal working dilution should be determined by the investigator.
Restrictions:	For Research Use only

Handling

Format:	Liquid
Concentration:	0.25 mg/mL
Buffer:	PBS containing 0.09 % (W/V) Sodium Azide as preservative
Preservative:	Sodium azide
Precaution of Use:	This product contains sodium azide: a POISONOUS AND HAZARDOUS SUBSTANCE which should be handled by trained staff only.
Handling Advice:	Avoid repeated freezing and thawing.
Storage:	4 °C/-20 °C
Storage Comment:	Store undiluted at 2-8 °C for one month or (in aliquots) at -20 °C for longer.



Flow Cytometry

Image 1. Flow cytometric analysis of WiDr cells using Gasdermin C Antibody (Center) Cat.-No AP51961PU-N (right histogram) compared to a negative control cell (left histogram). FITC-conjugated goat-anti-rabbit secondary antibodies were used for the analysis.

Immunohistochemistry (Paraffin-embedded Sections)

Image 2. Immunohistochemistry analysis in formalin fixed and paraffin embedded human spleen tissue reacted with Gasdermin C Antibody (Center) followed by peroxidase conjugation of the secondary antibody and DAB staining.

Western Blotting

Image 3. Western blot analysis of Gasdermin C Antibody (Center) in WiDr cell line lysates (35ug/lane). This demonstrates the GSDMC antibody detected the GSDMC protein (arrow).