

Datasheet for ABIN952469  
**anti-GBE1 antibody (Middle Region)**

## 3 Images

[Go to Product page](#)

## Overview

Quantity:	0.4 mL
Target:	GBE1
Binding Specificity:	AA 534-564, Middle Region
Reactivity:	Human, Mouse
Host:	Rabbit
Clonality:	Polyclonal
Conjugate:	This GBE1 antibody is un-conjugated
Application:	Western Blotting (WB), Immunofluorescence (IF), Enzyme Immunoassay (EIA)

## Product Details

Immunogen:	KLH conjugated synthetic peptide between 534~564 amino acids from the Central region of human GBE1
Isotype:	Ig Fraction
Specificity:	This antibody recognizes Human and Mouse GBE1 (Center).
Purification:	Protein A column, followed by peptide affinity purification

## Target Details

Target:	GBE1
Alternative Name:	GBE1 ( <a href="#">GBE1 Products</a> )
Background:	GBE1 is a glycogen branching enzyme that catalyzes the transfer of alpha-1,4-linked glucosyl

## Target Details

units from the outer end of a glycogen chain to an alpha-1,6 position on the same or a neighboring glycogen chain. Branching of the chains is essential to increase the solubility of the glycogen molecule and, consequently, in reducing the osmotic pressure within cells. Highest level of this enzyme are found in liver and muscle. Mutations in this gene are associated with glycogen storage disease IV (also known as Andersen's disease. Synonyms: 1, 4-alpha-glucan-branching enzyme, Brancher enzyme, Glycogen-branching enzyme

Molecular Weight: 80460 Da

Gene ID: 2632

NCBI Accession: [NP\\_000149](#)

Pathways: [Cellular Glucan Metabolic Process](#)

## Application Details

Application Notes: Optimal working dilution should be determined by the investigator.

Restrictions: For Research Use only

## Handling

Format: Liquid

Concentration: 0.25 mg/mL

Buffer: PBS containing 0.09 % (W/V) Sodium Azide as preservative

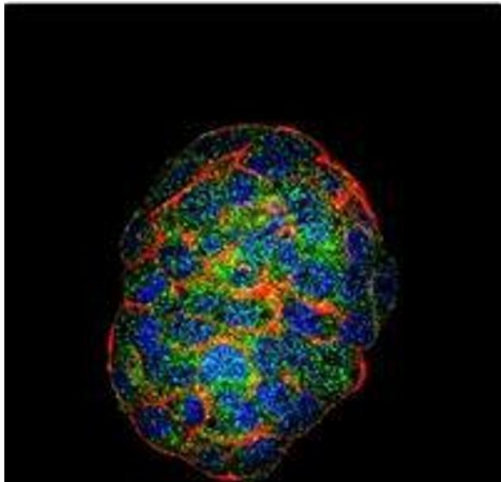
Preservative: Sodium azide

Precaution of Use: This product contains sodium azide: a POISONOUS AND HAZARDOUS SUBSTANCE which should be handled by trained staff only.

Handling Advice: Avoid repeated freezing and thawing.

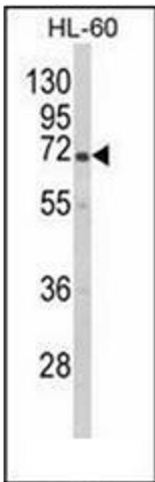
Storage: 4 °C/-20 °C

Storage Comment: Store undiluted at 2-8 °C for one month or (in aliquots) at -20 °C for longer.



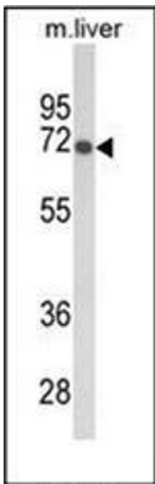
### Immunofluorescence

**Image 1.** Confocal immunofluorescent analysis of GBE1 Antibody (Center) Cat.-No AP51790PU-N with HepG2 cell followed by Alexa Fluor 488-conjugated goat anti-rabbit IgG (green). Actin filaments have been labeled with Alexa Fluor 555 phalloidin (red). DAPI was used to stain the cell nuclear (blue).



### Western Blotting

**Image 2.** Western blot analysis of GBE1 Antibody (Center) in HL-60 cell line lysates (35ug/lane).



### Western Blotting

**Image 3.** Western blot analysis of GBE1 Antibody (Center) in mouse liver tissue lysates (35ug/lane).