

Datasheet for ABIN952472
anti-GCC1 antibody (C-Term)

2 Images

[Go to Product page](#)

Overview

Quantity:	0.4 mL
Target:	GCC1
Binding Specificity:	AA 670-700, C-Term
Reactivity:	Human
Host:	Rabbit
Clonality:	Polyclonal
Conjugate:	This GCC1 antibody is un-conjugated
Application:	Western Blotting (WB), Immunohistochemistry (Paraffin-embedded Sections) (IHC (p)), Enzyme Immunoassay (EIA)

Product Details

Immunogen:	KLH conjugated synthetic peptide between 670-700 amino acids from the C-terminal region of human GCC1
Isotype:	Ig Fraction
Specificity:	This antibody recognizes Human GCC1 (C-term).
Purification:	Protein A column, followed by peptide affinity purification

Target Details

Target:	GCC1
Alternative Name:	GCC1 (GCC1 Products)

Target Details

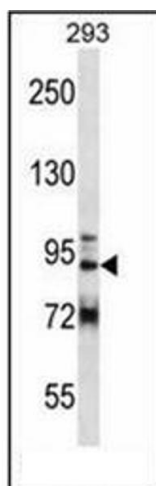
Background:	The protein encoded by this gene is a peripheral membrane protein. It is sensitive to brefeldin A. This encoded protein contains a GRIP domain which is thought to be used in targeting. It may play a role in the organization of trans-Golgi network subcompartment involved with membrane transport. [provided by RefSeq].Synonyms: GRIP and coiled-coil domain-containing protein 1, Golgi coiled-coil protein 1
Molecular Weight:	87811 Da
Gene ID:	79571
NCBI Accession:	NP_078799
Pathways:	SARS-CoV-2 Protein Interactome

Application Details

Application Notes:	Optimal working dilution should be determined by the investigator.
Restrictions:	For Research Use only

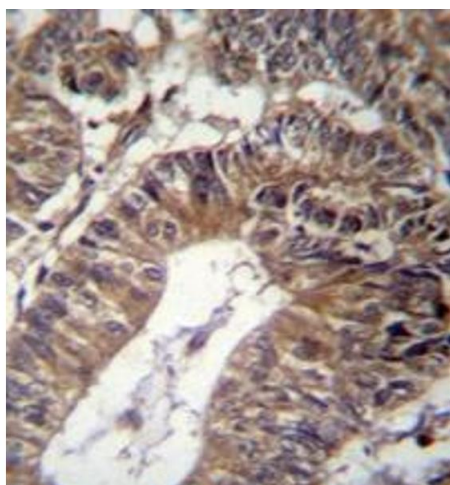
Handling

Format:	Liquid
Concentration:	0.25 mg/mL
Buffer:	PBS containing 0.09 % (W/V) Sodium Azide as preservative
Preservative:	Sodium azide
Precaution of Use:	This product contains sodium azide: a POISONOUS AND HAZARDOUS SUBSTANCE which should be handled by trained staff only.
Handling Advice:	Avoid repeated freezing and thawing.
Storage:	4 °C/-20 °C
Storage Comment:	Store undiluted at 2-8 °C for one month or (in aliquots) at -20 °C for longer.



Western Blotting

Image 1. Western blot analysis of GCC1 Antibody (C-term) in 293 cell line lysates (35ug/lane). This demonstrates the GCC1 antibody detected the GCC1 protein (arrow).



Immunohistochemistry (Paraffin-embedded Sections)

Image 2. Immunohistochemistry analysis in formalin fixed and paraffin embedded human colon carcinoma reacted with GCC1 Antibody (C-term) followed by peroxidase conjugation of the secondary antibody and DAB staining.