

Datasheet for ABIN952473
anti-GCC2 antibody (C-Term)[Go to Product page](#)

2 Images

Overview

Quantity:	0.4 mL
Target:	GCC2
Binding Specificity:	AA 1548-1617, C-Term
Reactivity:	Human, Mouse
Host:	Rabbit
Clonality:	Polyclonal
Conjugate:	This GCC2 antibody is un-conjugated
Application:	Western Blotting (WB), Immunohistochemistry (Paraffin-embedded Sections) (IHC (p)), Enzyme Immunoassay (EIA)

Product Details

Immunogen:	KLH conjugated synthetic peptide between 1548-1617 amino acids from the C-terminal region of human GCC2
Isotype:	Ig Fraction
Specificity:	This antibody recognizes Human and Mouse GCC2 (C-term).
Purification:	Protein A column, followed by peptide affinity purification

Target Details

Target:	GCC2
Alternative Name:	GCC2 (GCC2 Products)

Target Details

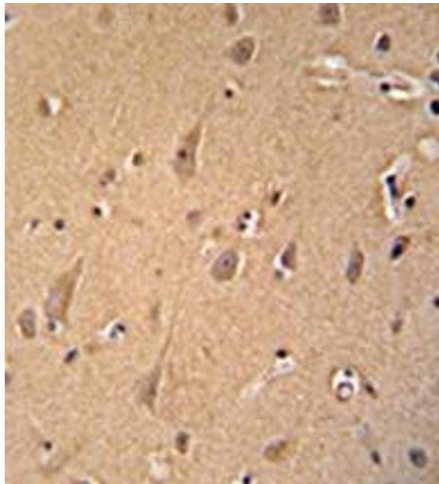
Background:	The protein encoded by this gene is a peripheral membrane protein localized to the trans-Golgi network. It is sensitive to brefeldin A. This encoded protein contains a GRIP domain which is thought to be used in targeting. Alternative splicing results in multiple transcript variants Synonyms: CLL-associated antigen KW-11, CTCL tumor antigen se1-1, GRIP and coiled-coil domain-containing protein 2, Golgi coiled-coil protein GCC185, KIAA0336, KW-11, NY-REN-5, RANBP2L4, Ran-binding protein 2-like 4, Renal carcinoma antigen NY-REN-5, se1-1
Molecular Weight:	195910 Da
Gene ID:	9648
NCBI Accession:	NP_852118
Pathways:	Maintenance of Protein Location , SARS-CoV-2 Protein Interactome

Application Details

Application Notes:	Optimal working dilution should be determined by the investigator.
Restrictions:	For Research Use only

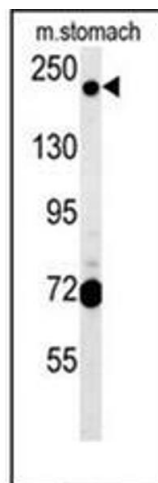
Handling

Format:	Liquid
Concentration:	0.25 mg/mL
Buffer:	PBS containing 0.09 % (W/V) Sodium Azide as preservative
Preservative:	Sodium azide
Precaution of Use:	This product contains sodium azide: a POISONOUS AND HAZARDOUS SUBSTANCE which should be handled by trained staff only.
Handling Advice:	Avoid repeated freezing and thawing.
Storage:	4 °C/-20 °C
Storage Comment:	Store undiluted at 2-8 °C for one month or (in aliquots) at -20 °C for longer.



Immunohistochemistry (Paraffin-embedded Sections)

Image 1. Immunohistochemistry analysis in formalin fixed and paraffin embedded human brain tissue reacted with AP51797PU-N, which was peroxidase conjugated to the secondary antibody and followed by DAB staining.



Western Blotting

Image 2. Western blot analysis of GCC2 Antibody (C-term) in mouse stomach tissue lysates (15ug/lane). This demonstrates the GCC2 antibody detected GCC2 protein (arrow).