

Datasheet for ABIN952474  
**anti-GCDH antibody (C-Term)**[Go to Product page](#)

## 2 Images

## Overview

Quantity:	0.4 mL
Target:	GCDH
Binding Specificity:	AA 335-365, C-Term
Reactivity:	Human
Host:	Rabbit
Clonality:	Polyclonal
Conjugate:	This GCDH antibody is un-conjugated
Application:	Western Blotting (WB), Immunohistochemistry (Paraffin-embedded Sections) (IHC (p)), Enzyme Immunoassay (EIA)

## Product Details

Immunogen:	KLH conjugated synthetic peptide between 335-365 amino acids from the C-terminal region of Human GCD / GCDH
Isotype:	Ig Fraction
Specificity:	This antibody recognizes Human GCD / GCDH (C-term).
Purification:	Protein A column, followed by peptide affinity purification

## Target Details

Target:	GCDH
Alternative Name:	GCD / GCDH ( <a href="#">GCDH Products</a> )

## Target Details

**Background:** The protein encoded by this gene belongs to the acyl-CoA dehydrogenase family. It catalyzes the oxidative decarboxylation of glutaryl-CoA to crotonyl-CoA and CO(2) in the degradative pathway of L-lysine, L-hydroxylysine, and L-tryptophan metabolism. It uses electron transfer flavoprotein as its electron acceptor. The enzyme exists in the mitochondrial matrix as a homotetramer of 45-kD subunits. Alternatively spliced transcript variants encoding different isoforms have been identified. **Synonyms:** Glutaryl-CoA dehydrogenase

**Molecular Weight:** 48127 Da

**Gene ID:** 2639

**NCBI Accession:** [NP\\_000150](#)

## Application Details

**Application Notes:** Optimal working dilution should be determined by the investigator.

**Restrictions:** For Research Use only

## Handling

**Format:** Liquid

**Concentration:** 0.25 mg/mL

**Buffer:** PBS containing 0.09 % (W/V) Sodium Azide as preservative

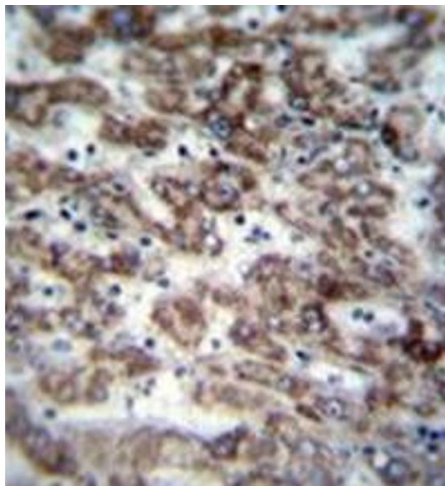
**Preservative:** Sodium azide

**Precaution of Use:** This product contains sodium azide: a POISONOUS AND HAZARDOUS SUBSTANCE which should be handled by trained staff only.

**Handling Advice:** Avoid repeated freezing and thawing.

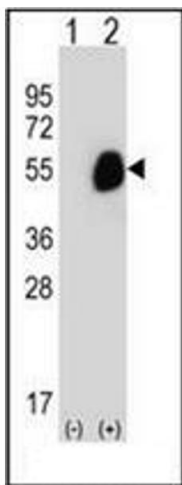
**Storage:** 4 °C/-20 °C

**Storage Comment:** Store undiluted at 2-8 °C for one month or (in aliquots) at -20 °C for longer.



#### Immunohistochemistry (Paraffin-embedded Sections)

**Image 1.** Immunohistochemistry analysis in formalin fixed and paraffin embedded human liver tissue reacted with GCD / GCDH Antibody (C-term) followed by peroxidase conjugation of the secondary antibody and DAB staining.



#### Western Blotting

**Image 2.** Western blot analysis of GCDH (arrow) using GCD / GCDH Antibody (C-term) Cat.-No AP51799PU-N. 293 cell lysates (2 ug/lane) either nontransfected (Lane 1) or transiently transfected (Lane 2) with the GCDH gene.