

Datasheet for ABIN952476  
**anti-PIP antibody (C-Term)**

## 3 Images

[Go to Product page](#)

## Overview

Quantity:	0.4 mL
Target:	PIP
Binding Specificity:	AA 84-113, C-Term
Reactivity:	Human
Host:	Rabbit
Clonality:	Polyclonal
Conjugate:	This PIP antibody is un-conjugated
Application:	Western Blotting (WB), Immunofluorescence (IF), Immunohistochemistry (Paraffin-embedded Sections) (IHC (p)), Enzyme Immunoassay (EIA)

## Product Details

Immunogen:	KLH conjugated synthetic peptide between 84-113 amino acids from the C-terminal region of Human PIP / GCDFP15
Isotype:	Ig Fraction
Specificity:	This antibody recognizes Human PIP / GCDFP15 (C-term).
Purification:	Protein A column, followed by peptide affinity purification

## Target Details

Target:	PIP
Alternative Name:	PIP / GCDFP15 ( <a href="#">PIP Products</a> )

## Target Details

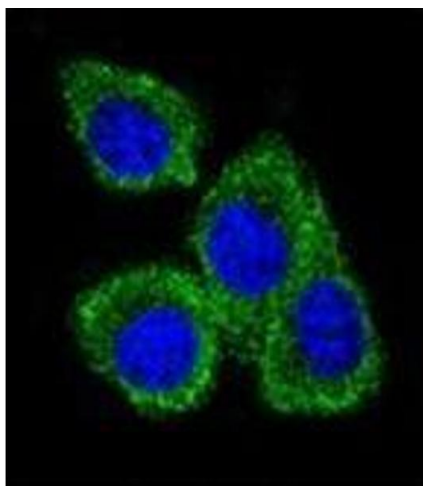
Background:	Catalyzes the addition of fucose in alpha 1-6 linkage to the first GlcNAc residue, next to the peptide chains in N-glycans.Synonyms: GCDFP-15, GPIP4, Gross cystic disease fluid protein 15, Prolactin-induced protein, Prolactin-inducible protein, SABP, Secretory actin-binding protein, gp17
Molecular Weight:	16572 Da
Gene ID:	5304
NCBI Accession:	<a href="#">NP_002643</a>

## Application Details

Application Notes:	Optimal working dilution should be determined by the investigator.
Restrictions:	For Research Use only

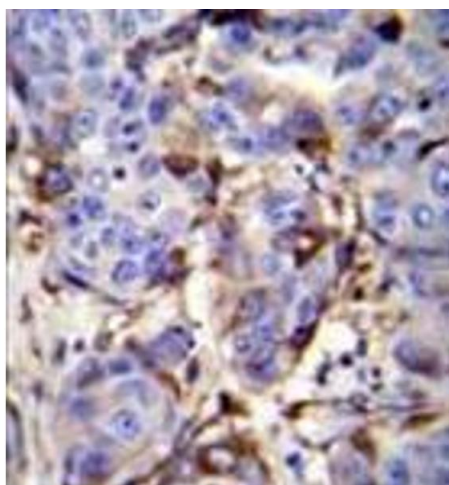
## Handling

Format:	Liquid
Concentration:	0.25 mg/mL
Buffer:	PBS containing 0.09 % (W/V) Sodium Azide as preservative
Preservative:	Sodium azide
Precaution of Use:	This product contains sodium azide: a POISONOUS AND HAZARDOUS SUBSTANCE which should be handled by trained staff only.
Handling Advice:	Avoid repeated freezing and thawing.
Storage:	4 °C/-20 °C
Storage Comment:	Store undiluted at 2-8 °C for one month or (in aliquots) at -20 °C for longer.



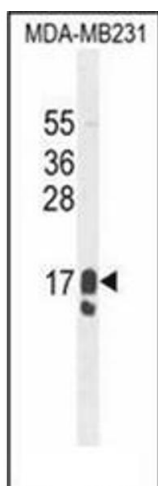
#### Immunofluorescence

**Image 1.** Confocal immunofluorescent analysis of PIP / GCDFP15 Antibody (C-term) Cat.-No AP51798PU-N with MDA-MB231 cell followed by Alexa Fluor 488-conjugated goat anti-rabbit IgG (green). DAPI was used to stain the cell nuclear (blue).



#### Immunohistochemistry (Paraffin-embedded Sections)

**Image 2.** Immunohistochemistry analysis in formalin fixed and paraffin embedded human breast carcinoma reacted PIP / GCDFP15 Antibody (C-term) followed by peroxidase conjugation of the secondary antibody and DAB staining.



#### Western Blotting

**Image 3.** Western blot analysis of PIP / GCDFP15 Antibody (C-term) in MDA-MB231 cell line lysates (35ug/lane). This demonstrates the GCDFP-15 antibody detected the GCDFP-15 protein (arrow).