

Datasheet for ABIN952477  
**anti-GCLC antibody (N-Term)**[Go to Product page](#)

## 4 Images

## Overview

Quantity:	0.4 mL
Target:	GCLC
Binding Specificity:	AA 6-34, N-Term
Reactivity:	Human
Host:	Rabbit
Clonality:	Polyclonal
Conjugate:	This GCLC antibody is un-conjugated
Application:	Western Blotting (WB), Immunofluorescence (IF), Flow Cytometry (FACS), Immunohistochemistry (Paraffin-embedded Sections) (IHC (p)), Enzyme Immunoassay (EIA)

## Product Details

Immunogen:	KLH conjugated synthetic peptide between 6-34 amino acids from the N-terminal region of Human GCLC / GLCLC
Isotype:	Ig Fraction
Specificity:	This antibody recognizes Human GCL / GLCLC (N-term).
Purification:	Protein A column, followed by peptide affinity purification

## Target Details

Target:	GCLC
Alternative Name:	GCLC / GLCLC ( <a href="#">GCLC Products</a> )

## Target Details

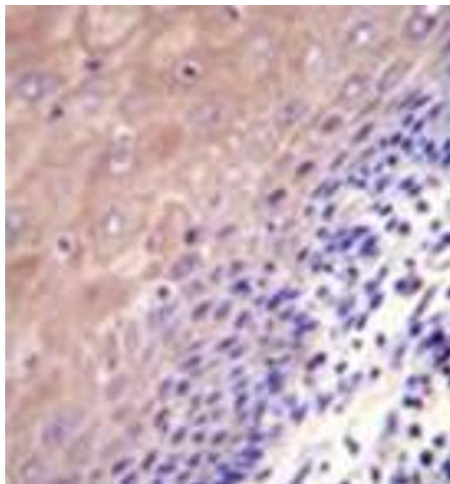
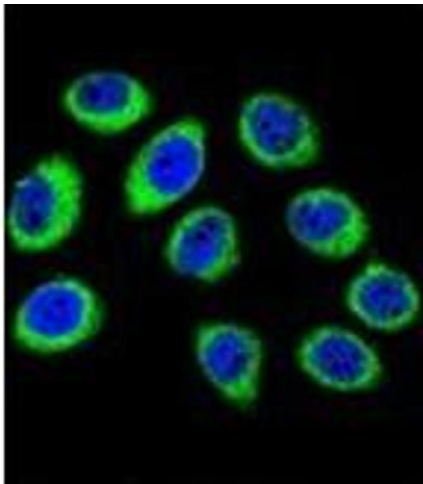
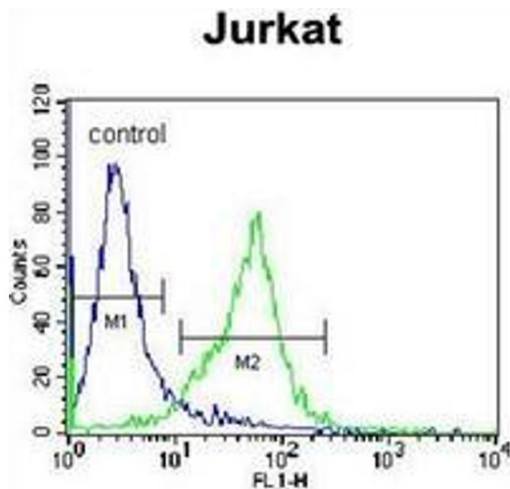
Background:	Glutamate-cysteine ligase, also known as gamma-glutamylcysteine synthetase is the first rate-limiting enzyme of glutathione synthesis. The enzyme consists of two subunits, a heavy catalytic subunit and a light regulatory subunit. This locus encodes the catalytic subunit, while the regulatory subunit is derived from a different gene located on chromosome 1p22-p21. Mutations at this locus have been associated with hemolytic anemia due to deficiency of gamma-glutamylcysteine synthetase and susceptibility to myocardial infarction.Synonyms: GCS heavy chain, GLCL, GLCLC, Gamma-ECS, Gamma-glutamylcysteine synthetase, Glutamate-cysteine ligase catalytic subunit
Molecular Weight:	72766 Da
Gene ID:	2729
NCBI Accession:	<a href="#">NP_001184044</a>
Pathways:	<a href="#">Cell RedoxHomeostasis</a>

## Application Details

Application Notes:	Optimal working dilution should be determined by the investigator.
Restrictions:	For Research Use only

## Handling

Format:	Liquid
Concentration:	0.25 mg/mL
Buffer:	PBS containing 0.09 % (W/V) Sodium Azide as preservative
Preservative:	Sodium azide
Precaution of Use:	This product contains sodium azide: a POISONOUS AND HAZARDOUS SUBSTANCE which should be handled by trained staff only.
Handling Advice:	Avoid repeated freezing and thawing.
Storage:	4 °C/-20 °C
Storage Comment:	Store undiluted at 2-8 °C for one month or (in aliquots) at -20 °C for longer.



### Flow Cytometry

**Image 1.** Flow cytometric analysis of Jurkat cells using GCLC / GLCLC Antibody (N-term) Cat.-No AP51800PU-N (right histogram) compared to a negative control cell (left histogram). FITC-conjugated donkey-anti-rabbit secondary antibodies were used for the analysis.

### Immunofluorescence

**Image 2.** Confocal immunofluorescent analysis of GCLC / GLCLC Antibody (N-term) Cat.-No AP51800PU-N with U-251MG cell followed by Alexa Fluor 488-conjugated goat anti-rabbit IgG (green). DAPI was used to stain the cell nuclear (blue).

### Immunohistochemistry (Paraffin-embedded Sections)

**Image 3.** Immunohistochemistry analysis in formalin fixed and paraffin embedded human esophageal carcinoma reacted with GCLC / GLCLC Antibody (N-term) followed by peroxidase conjugation of the secondary antibody and DAB staining

Please check the [product details page](#) for more images. Overall 4 images are available for ABIN952477.