



[Go to Product page](#)

Datasheet for ABIN952486
anti-GDF15 antibody (N-Term)

3 Images

Overview

Quantity:	0.4 mL
Target:	GDF15
Binding Specificity:	AA 50-79, N-Term
Reactivity:	Human
Host:	Rabbit
Clonality:	Polyclonal
Conjugate:	This GDF15 antibody is un-conjugated
Application:	Western Blotting (WB), Flow Cytometry (FACS), Immunohistochemistry (Paraffin-embedded Sections) (IHC (p)), Enzyme Immunoassay (EIA)

Product Details

Immunogen:	KLH conjugated synthetic peptide between 50-79 amino acids from the N-terminal region of human GDF15
Isotype:	Ig Fraction
Specificity:	This antibody recognizes Human GDF15 (N-term).
Purification:	Protein A column, followed by peptide affinity purification

Target Details

Target:	GDF15
Alternative Name:	GDF15 (GDF15 Products)

Target Details

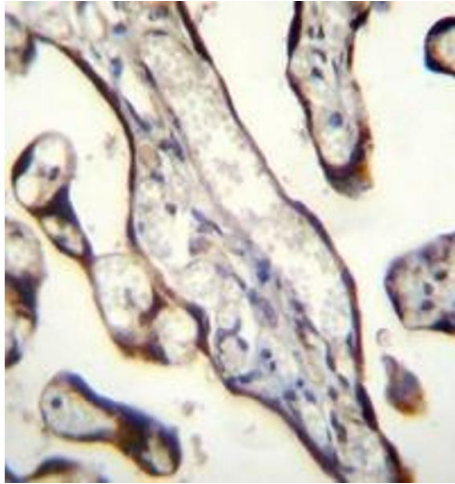
Background:	Synonyms: GDF-15, Growth/differentiation factor 15, MIC-1, MIC1, Macrophage inhibitory cytokine 1, NAG-1, NRG-1, NSAID-activated gene 1 protein, NSAID-regulated gene 1 protein, PDF, PLAB, PTGFB, Placental TGF-beta, Placental bone morphogenetic protein, Prostate differentiation factor
Molecular Weight:	34140 Da
Gene ID:	9518
NCBI Accession:	NP_004855
Pathways:	SARS-CoV-2 Protein Interactome

Application Details

Application Notes:	Optimal working dilution should be determined by the investigator.
Restrictions:	For Research Use only

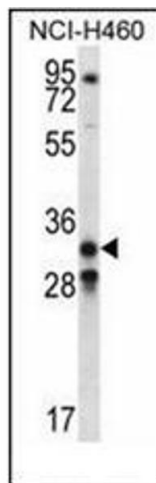
Handling

Format:	Liquid
Concentration:	0.25 mg/mL
Buffer:	PBS containing 0.09 % (W/V) Sodium Azide as preservative
Preservative:	Sodium azide
Precaution of Use:	This product contains sodium azide: a POISONOUS AND HAZARDOUS SUBSTANCE which should be handled by trained staff only.
Handling Advice:	Avoid repeated freezing and thawing.
Storage:	4 °C/-20 °C
Storage Comment:	Store undiluted at 2-8 °C for one month or (in aliquots) at -20 °C for longer.



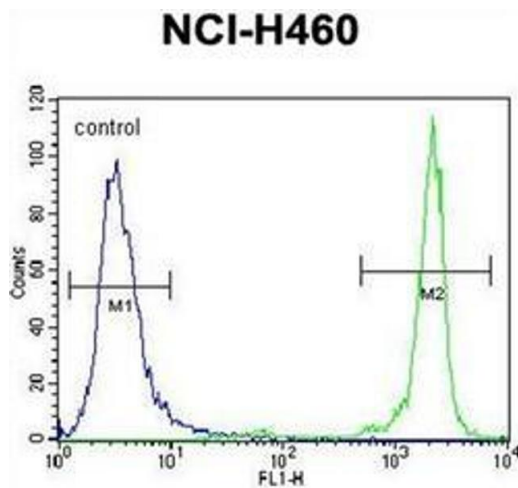
Immunohistochemistry (Paraffin-embedded Sections)

Image 1. Immunohistochemistry analysis in formalin fixed and paraffin embedded human placenta tissue reacted with GDF15 Antibody (N-term) followed by peroxidase conjugation of the secondary antibody and DAB staining.



Western Blotting

Image 2. Western blot analysis of GDF15 Antibody (N-term) in NCI-H460 cell line lysates (35ug/lane). This demonstrates the GDF15 antibody detected the GDF15 protein (arrow).



Flow Cytometry

Image 3. Flow cytometric analysis of NCI-H460 cells using GDF15 Antibody (N-term) Cat.-No AP51810PU-N (right histogram) compared to a negative control cell (left histogram). FITC-conjugated goat-anti-rabbit secondary antibodies were used for the analysis.