

Datasheet for ABIN952503  
**anti-GFPT2 antibody (Middle Region)**

## 3 Images

[Go to Product page](#)

## Overview

Quantity:	0.4 mL
Target:	GFPT2
Binding Specificity:	AA 181-210, Middle Region
Reactivity:	Human
Host:	Rabbit
Clonality:	Polyclonal
Conjugate:	This GFPT2 antibody is un-conjugated
Application:	Western Blotting (WB), Flow Cytometry (FACS), Immunohistochemistry (Paraffin-embedded Sections) (IHC (p)), Enzyme Immunoassay (EIA)

## Product Details

Immunogen:	KLH conjugated synthetic peptide between 181~210 amino acids from the Center region of human GFPT2 / GFAT2
Isotype:	Ig Fraction
Specificity:	This antibody recognizes Human GFPT2 / GFAT2 (Center).
Purification:	Protein A column, followed by peptide affinity purification

## Target Details

Target:	GFPT2
Alternative Name:	GFPT2 / GFAT2 ( <a href="#">GFPT2 Products</a> )

## Target Details

**Background:** GFPT2 controls the flux of glucose into the hexosamine pathway. This protein most likely involved in regulating the availability of precursors for N-and O-linked glycosylation of proteins. **Synonyms:** D-fructose-6-phosphate amidotransferase 2, Glucosamine--fructose-6-phosphate aminotransferase [isomerizing] 2, Glutamine:fructose 6 phosphate amidotransferase 2, Hexosephosphate aminotransferase 2

**Molecular Weight:** 76931 Da

**Gene ID:** 9945

**NCBI Accession:** [NP\\_005101](#)

## Application Details

**Application Notes:** Optimal working dilution should be determined by the investigator.

**Restrictions:** For Research Use only

## Handling

**Format:** Liquid

**Concentration:** 0.25 mg/mL

**Buffer:** PBS containing 0.09 % (W/V) Sodium Azide as preservative

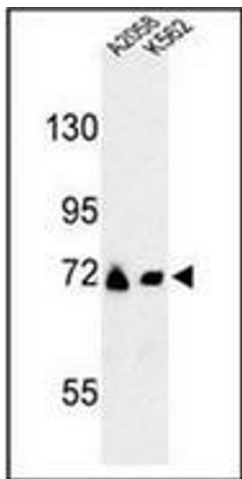
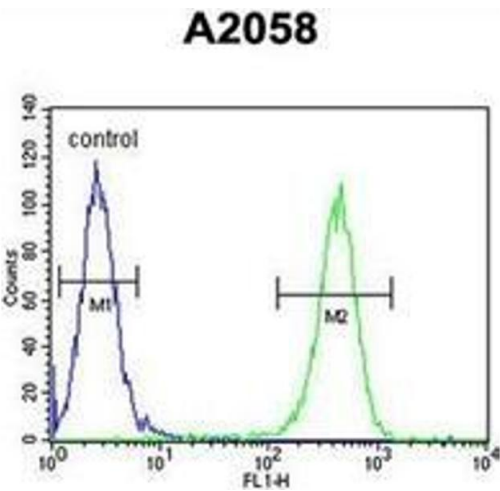
**Preservative:** Sodium azide

**Precaution of Use:** This product contains sodium azide: a POISONOUS AND HAZARDOUS SUBSTANCE which should be handled by trained staff only.

**Handling Advice:** Avoid repeated freezing and thawing.

**Storage:** 4 °C/-20 °C

**Storage Comment:** Store undiluted at 2-8 °C for one month or (in aliquots) at -20 °C for longer.



### Flow Cytometry

**Image 1.** Flow cytometric analysis of A2058 cells using GFPT2 / GFAT2 Antibody (Center) Cat.-No AP51823PU-N (right histogram) compared to a negative control cell (left histogram). FITC-conjugated goat-anti-rabbit secondary antibodies were used for the analysis.

### Immunohistochemistry (Paraffin-embedded Sections)

**Image 2.** Immunohistochemistry analysis in formalin fixed and paraffin embedded human skin reacted with GFPT2 / GFAT2 Antibody (Center) followed which was peroxidase conjugated to the secondary antibody and followed by DAB staining.

### Western Blotting

**Image 3.** Western blot analysis of GFPT2 / GFAT2 Antibody (Center) in A2058, K562 cell line lysates (35ug/lane). GFPT2 (arrow) was detected using the purified Pab.