

Datasheet for ABIN952505

anti-GFRA3 antibody (Middle Region)[Go to Product page](#)**1** Image

Overview

Quantity:	0.4 mL
Target:	GFRA3
Binding Specificity:	AA 115-144, Middle Region
Reactivity:	Human
Host:	Rabbit
Clonality:	Polyclonal
Conjugate:	This GFRA3 antibody is un-conjugated
Application:	Western Blotting (WB), Enzyme Immunoassay (EIA)

Product Details

Immunogen:	KLH conjugated synthetic peptide between 115-144 amino acids from the Central region of human GFRA3
Isotype:	Ig Fraction
Specificity:	This antibody recognizes Human GFRA3 (Center).
Purification:	Protein A column, followed by peptide affinity purification

Target Details

Target:	GFRA3
Alternative Name:	GFRA3 / GDNFR-alpha 3 (GFRA3 Products)
Background:	GFRA3 is a glycosylphosphatidylinositol(GPI)-linked cell surface receptor and a member of the

Target Details

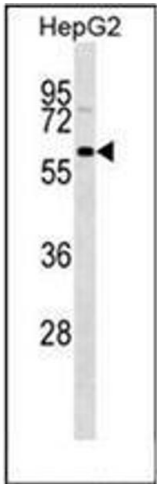
	GDNF receptor family. It forms a signaling receptor complex with RET tyrosine kinase receptor and binds the ligand, artemin.Synonyms: GDNF family receptor alpha-3, GDNF receptor alpha-3, GFR-alpha-3
Molecular Weight:	44511 Da
Gene ID:	2676
NCBI Accession:	NP_001487

Application Details

Application Notes:	Optimal working dilution should be determined by the investigator.
Restrictions:	For Research Use only

Handling

Format:	Liquid
Concentration:	0.25 mg/mL
Buffer:	PBS containing 0.09 % (W/V) Sodium Azide as preservative
Preservative:	Sodium azide
Precaution of Use:	This product contains sodium azide: a POISONOUS AND HAZARDOUS SUBSTANCE which should be handled by trained staff only.
Handling Advice:	Avoid repeated freezing and thawing.
Storage:	4 °C/-20 °C
Storage Comment:	Store undiluted at 2-8 °C for one month or (in aliquots) at -20 °C for longer.



Western Blotting

Image 1. Western blot analysis of GFRA3 Antibody (Center) Cat.-No AP51825PU-N in HepG2 cell line lysates (35ug/lane). This demonstrates the GFRA3 antibody detected the GFRA3 protein (arrow).