



[Go to Product page](#)

Datasheet for ABIN952506
anti-GFRAL antibody (C-Term)

3 Images

Overview

Quantity:	200 µL
Target:	GFRAL
Binding Specificity:	AA 366-394, C-Term
Reactivity:	Human
Host:	Rabbit
Clonality:	Polyclonal
Conjugate:	This GFRAL antibody is un-conjugated
Application:	Western Blotting (WB), Flow Cytometry (FACS), Immunohistochemistry (Paraffin-embedded Sections) (IHC (p)), Enzyme Immunoassay (EIA)

Product Details

Immunogen:	KLH conjugated synthetic peptide between 366-394 amino acids from the C-terminal region of human GFRAL
Isotype:	Ig Fraction
Specificity:	This antibody recognizes Human GFRAL (C-term).
Purification:	Affinity Chromatography on Protein A

Target Details

Target:	GFRAL
Alternative Name:	GFRAL (GFRAL Products)

Target Details

Background:	Synonyms: C6orf144, GDNF family receptor alpha-like, UNQ9356/PRO34128
Molecular Weight:	44518 Da
Gene ID:	389400
NCBI Accession:	NP_997293

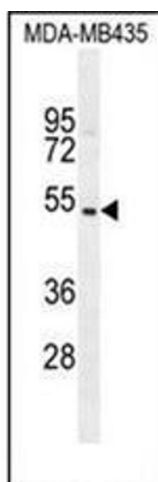
Application Details

Application Notes:	Optimal working dilution should be determined by the investigator.
Restrictions:	For Research Use only

Handling

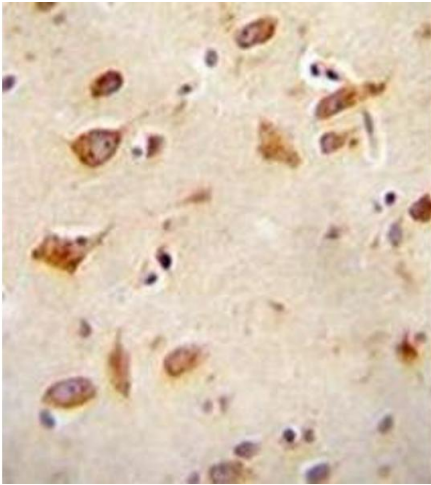
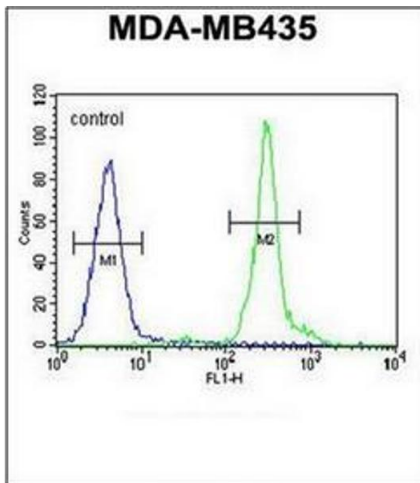
Format:	Liquid
Concentration:	0.25 mg/mL
Buffer:	PBS containing 0.09 % (W/V) Sodium Azide as preservative
Preservative:	Sodium azide
Precaution of Use:	This product contains sodium azide: a POISONOUS AND HAZARDOUS SUBSTANCE which should be handled by trained staff only.
Handling Advice:	Avoid repeated freezing and thawing.
Storage:	4 °C/-20 °C
Storage Comment:	Store undiluted at 2-8 °C for one month or (in aliquots) at -20 °C for longer.

Images



Western Blotting

Image 1. Western blot analysis of GFRAL Antibody (C-term) in MDA-MB435 cell line lysates (35ug/lane). This demonstrates the GFRAL antibody detected the GFRAL protein (arrow).



Flow Cytometry

Image 2. Flow cytometric analysis of MDA-MB435 cells using GFRAL Antibody (C-term) Cat.-No AP51826PU-N (right histogram) compared to a negative control cell (left histogram). FITC-conjugated goat-anti-rabbit secondary antibodies were used for the analysis.

Immunohistochemistry (Paraffin-embedded Sections)

Image 3. Formalin fixed and paraffin embedded human brain tissue reacted with GFRAL Antibody (C-term) followed by peroxidase conjugation of the secondary antibody and DAB staining.