

Datasheet for ABIN952508  
**anti-GGCX antibody (Middle Region)**

## 2 Images

[Go to Product page](#)

## Overview

Quantity:	0.4 mL
Target:	GGCX
Binding Specificity:	AA 555-585, Middle Region
Reactivity:	Human
Host:	Rabbit
Clonality:	Polyclonal
Application:	Western Blotting (WB), Immunohistochemistry (Paraffin-embedded Sections) (IHC (p)), Enzyme Immunoassay (EIA)

## Product Details

Immunogen:	KLH conjugated synthetic peptide between 555-585 amino acids from the Central region of Human GGCX
Isotype:	Ig Fraction
Specificity:	This antibody recognizes Human GGCX (Center).
Purification:	Affinity Chromatography on Protein A

## Target Details

Target:	GGCX
Alternative Name:	GGCX ( <a href="#">GGCX Products</a> )
Background:	This gene encodes an enzyme which catalyzes the posttranslational modification of vitamin K-dependent protein. Many of these vitamin K-dependent proteins are involved in coagulation so

## Target Details

the function of the encoded enzyme is essential for hemostasis. Mutations in this gene are associated with vitamin K-dependent coagulation defect and PXE-like disorder with multiple coagulation factor deficiency. Multiple transcript variants encoding different isoforms have been found for this gene. Synonyms: GC, Gamma-glutamyl carboxylase, Vitamin K gamma glutamyl carboxylase, Vitamin K-dependent gamma-carboxylase

Molecular Weight: 87561 Da

Gene ID: 2677

NCBI Accession: [NP\\_000812](#)

Pathways: [SARS-CoV-2 Protein Interactome](#)

## Application Details

Application Notes: Optimal working dilution should be determined by the investigator.

Restrictions: For Research Use only

## Handling

Format: Liquid

Concentration: 0.25 mg/mL

Buffer: PBS containing 0.09 % (W/V) Sodium Azide as preservative

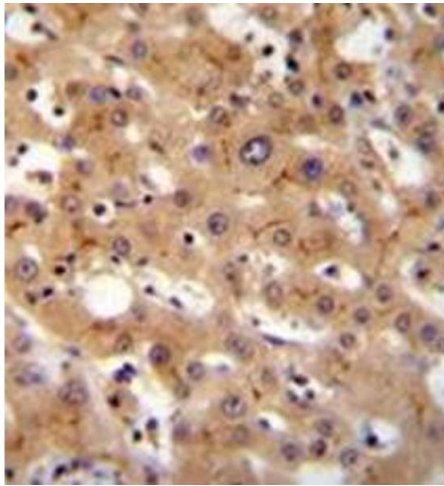
Preservative: Sodium azide

Precaution of Use: This product contains sodium azide: a POISONOUS AND HAZARDOUS SUBSTANCE which should be handled by trained staff only.

Handling Advice: Avoid repeated freezing and thawing.

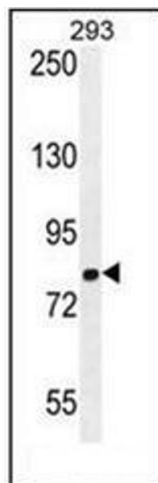
Storage: 4 °C/-20 °C

Storage Comment: Store undiluted at 2-8 °C for one month or (in aliquots) at -20 °C for longer.



#### Immunohistochemistry (Paraffin-embedded Sections)

**Image 1.** Formalin fixed and paraffin embedded human liver tissue reacted with GGCX Antibody (Center) followed by peroxidase conjugation of the secondary antibody and DAB staining.



#### Western Blotting

**Image 2.** Western blot analysis of GGCX Antibody (Center) in 293 cell line lysates (35ug/lane). This demonstrates the GGCX antibody detected the GGCX protein (arrow).