



[Go to Product page](#)

Datasheet for ABIN952510
anti-gGT2 antibody (N-Term)

2 Images

Overview

Quantity:	0.4 mL
Target:	gGT2
Binding Specificity:	AA 19-48, N-Term
Reactivity:	Human
Host:	Rabbit
Clonality:	Polyclonal
Application:	Western Blotting (WB), Immunohistochemistry (Paraffin-embedded Sections) (IHC (p)), Enzyme Immunoassay (EIA)

Product Details

Immunogen:	KLH conjugated synthetic peptide between 19-48 amino acids from the N-terminal region of human GGT2
Isotype:	Ig Fraction
Purification:	Protein A column, followed by peptide affinity purification

Target Details

Target:	gGT2
Alternative Name:	GGT2 (gGT2 Products)
Background:	GGT2 initiates extracellular glutathione (GSH) breakdown, catalyzes the transfer of the glutamyl moiety of glutathione to amino acids and dipeptide acceptors (By similarity).Synonyms: Gamma-glutamyltransferase 2, Gamma-glutamyltranspeptidase 2

Target Details

Molecular Weight: 61771 Da

Gene ID: 9606

Application Details

Application Notes: Optimal working dilution should be determined by the investigator.

Restrictions: For Research Use only

Handling

Format: Liquid

Concentration: 0.25 mg/mL

Buffer: PBS containing 0.09 % (W/V) Sodium Azide as preservative

Preservative: Sodium azide

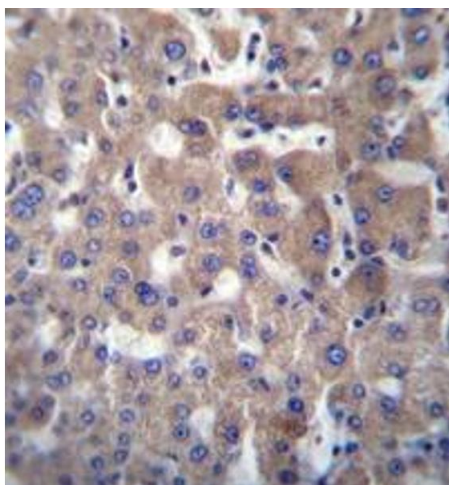
Precaution of Use: This product contains sodium azide: a POISONOUS AND HAZARDOUS SUBSTANCE which should be handled by trained staff only.

Handling Advice: Avoid repeated freezing and thawing.

Storage: 4 °C/-20 °C

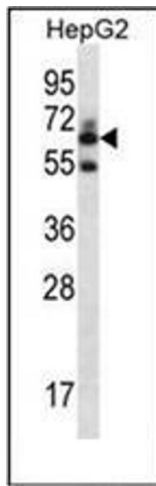
Storage Comment: Store undiluted at 2-8 °C for one month or (in aliquots) at -20 °C for longer.

Images



Immunohistochemistry (Paraffin-embedded Sections)

Image 1. Immunohistochemistry analysis of GGT2 Antibody (N-term) in formalin fixed and paraffin embedded human liver tissue followed by peroxidase conjugation of the secondary antibody and DAB staining.



Western Blotting

Image 2. Western blot analysis of GGT2 Antibody (N-term) in HepG2 cell line lysates (35ug/lane). This demonstrates the GGT2 antibody detected the GGT2 protein (arrow).