

Datasheet for ABIN952511
anti-GGTLC2 antibody (Middle Region)[Go to Product page](#)

3 Images

Overview

Quantity:	0.4 mL
Target:	GGTLC2
Binding Specificity:	AA 140-169, Middle Region
Reactivity:	Human
Host:	Rabbit
Clonality:	Polyclonal
Conjugate:	This GGTLC2 antibody is un-conjugated
Application:	Western Blotting (WB), Flow Cytometry (FACS), Immunohistochemistry (Paraffin-embedded Sections) (IHC (p)), Enzyme Immunoassay (EIA)

Product Details

Immunogen:	KLH conjugated synthetic peptide between 140-169 amino acids from the Central region of human GGTLC2
Isotype:	Ig Fraction
Specificity:	This antibody recognizes Human GGTLC2 (Center).
Purification:	Protein A column, followed by peptide affinity purification

Target Details

Target:	GGTLC2
Alternative Name:	GGTLC2 (GGTLC2 Products)

Target Details

Background: Gamma-glutamyltransferase-1 (GGT1, MIM 612346) is a membrane-bound extracellular enzyme that cleaves gamma-glutamyl peptide bonds in glutathione and other peptides and transfers the gamma-glutamyl moiety to acceptors. Autocatalytic cleavage of the GGT1 precursor polypeptide produces a heavy chain and a light chain that associate with each other to form the functional enzyme. Light chain-only GGTs, such as GGTL2, contain a region corresponding to the GGT1 light chain, but they lack the membrane-anchoring heavy chain region (Heisterkamp et al., 2008 [PubMed 18357469]).[supplied by OMIM].Synonyms: GGTL4, Gamma-glutamyltransferase light chain 2

Molecular Weight: 23661 Da

Gene ID: 91227

NCBI Accession: [NP_954578](#)

Application Details

Application Notes: Optimal working dilution should be determined by the investigator.

Restrictions: For Research Use only

Handling

Format: Liquid

Concentration: 0.25 mg/mL

Buffer: PBS containing 0.09 % (W/V) Sodium Azide as preservative

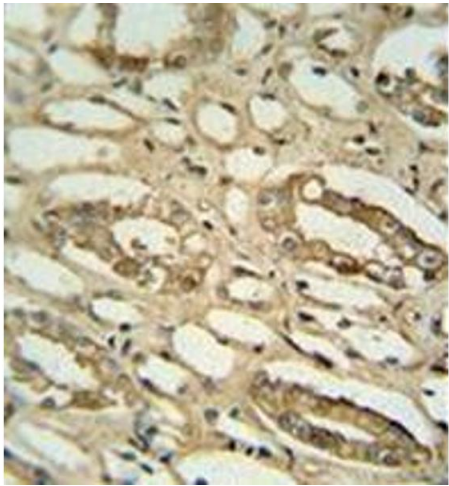
Preservative: Sodium azide

Precaution of Use: This product contains sodium azide: a POISONOUS AND HAZARDOUS SUBSTANCE which should be handled by trained staff only.

Handling Advice: Avoid repeated freezing and thawing.

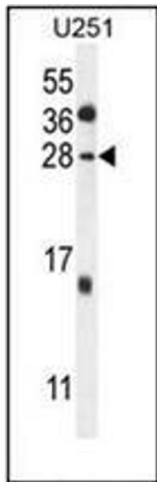
Storage: 4 °C/-20 °C

Storage Comment: Store undiluted at 2-8 °C for one month or (in aliquots) at -20 °C for longer.



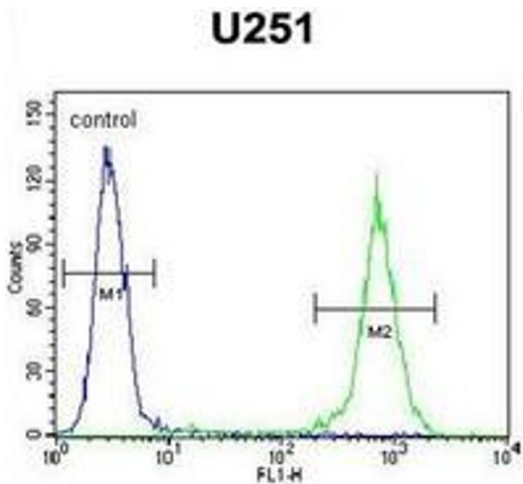
Immunohistochemistry (Paraffin-embedded Sections)

Image 1. Immunohistochemistry analysis in formalin fixed and paraffin embedded human lung tissue reacted with GGTL2 Antibody (Center) followed peroxidase conjugated to the secondary antibody and followed by DAB staining.



Western Blotting

Image 2. Western blot analysis of GGTL2 Antibody (Center) in U251 cell line lysates (35ug/lane). This demonstrates the GGTL2 antibody detected the GGTL2 protein (arrow).



Flow Cytometry

Image 3. Flow cytometric analysis of U251 cells using GGTL2 Antibody (Center) Cat.-No AP51833PU-N (right histogram) compared to a negative control cell (left histogram). FITC-conjugated goat-anti-rabbit secondary antibodies were used for the analysis