

Datasheet for ABIN952512
anti-GHSR antibody (C-Term)[Go to Product page](#)

2 Images

Overview

Quantity:	0.4 mL
Target:	GHSR
Binding Specificity:	AA 333-365, C-Term
Reactivity:	Human, Mouse
Host:	Rabbit
Clonality:	Polyclonal
Conjugate:	This GHSR antibody is un-conjugated
Application:	Western Blotting (WB), Immunohistochemistry (Paraffin-embedded Sections) (IHC (p)), Enzyme Immunoassay (EIA)

Product Details

Immunogen:	KLH conjugated synthetic peptide between 333-365 amino acids from the C-terminal region of Human Ghrelin receptor / GHSR
Isotype:	Ig Fraction
Specificity:	This antibody recognizes Human and Mouse Ghrelin receptor / GHSR (C-term).
Purification:	Protein A column, followed by peptide affinity purification

Target Details

Target:	GHSR
Alternative Name:	Ghrelin Receptor / GHSR (GHSR Products)

Target Details

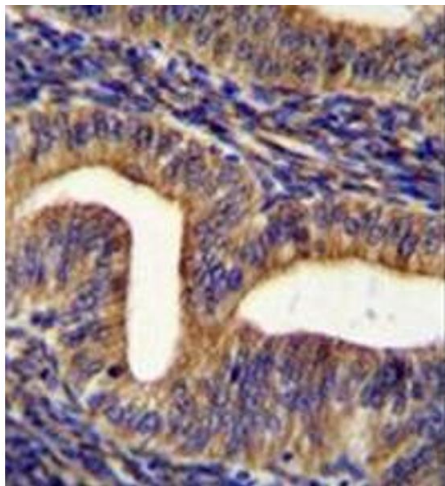
Background:	This gene encodes a member of the G-protein coupled receptor family. The encoded protein may play a role in energy homeostasis and regulation of body weight. Two identified transcript variants are expressed in several tissues and are evolutionary conserved in fish and swine. One transcript, 1a, excises an intron and encodes the functional protein, this protein is the receptor for the Ghrelin ligand and defines a neuroendocrine pathway for growth hormone release. The second transcript (1b) retains the intron and does not function as a receptor for Ghrelin, however, it may function to attenuate activity of isoform 1a. Mutations in this gene are associated with autosomal idiopathic short stature.Synonyms: GH-releasing peptide receptor, GHRP, Growth hormone secretagogue receptor type 1
Molecular Weight:	41329 Da
Gene ID:	2693
NCBI Accession:	NP_004113
Pathways:	Hormone Transport , Negative Regulation of Hormone Secretion , Feeding Behaviour

Application Details

Application Notes:	Optimal working dilution should be determined by the investigator.
Restrictions:	For Research Use only

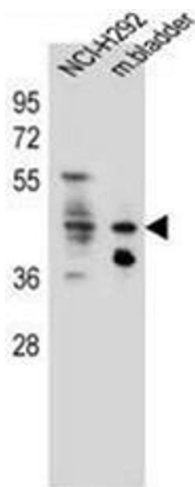
Handling

Format:	Liquid
Concentration:	0.25 mg/mL
Buffer:	PBS containing 0.09 % (W/V) Sodium Azide as preservative
Preservative:	Sodium azide
Precaution of Use:	This product contains sodium azide: a POISONOUS AND HAZARDOUS SUBSTANCE which should be handled by trained staff only.
Handling Advice:	Avoid repeated freezing and thawing.
Storage:	4 °C/-20 °C
Storage Comment:	Store undiluted at 2-8 °C for one month or (in aliquots) at -20 °C for longer.



Immunohistochemistry (Paraffin-embedded Sections)

Image 1. Immunohistochemistry analysis in formalin fixed and paraffin embedded human uterus tissue reacted with Ghrelin receptor / GHSR Antibody (C-term) followed by peroxidase conjugation of the secondary antibody and DAB staining.



Western Blotting

Image 2. Western blot analysis of Ghrelin receptor / GHSR Antibody (C-term) in NCI-H292 cell line and mouse bladder tissue lysates (35ug/lane). This demonstrates the GHSR antibody detected the GHSR protein (arrow).