



[Go to Product page](#)

Datasheet for ABIN952521

anti-GLCCI1 antibody (Middle Region)

2 Images

Overview

Quantity:	0.4 mL
Target:	GLCCI1
Binding Specificity:	AA 233-263, Middle Region
Reactivity:	Human
Host:	Rabbit
Clonality:	Polyclonal
Application:	Western Blotting (WB), Immunohistochemistry (Paraffin-embedded Sections) (IHC (p)), Enzyme Immunoassay (EIA)

Product Details

Immunogen:	KLH conjugated synthetic peptide between 233-263 amino acids from the Central region of human GLCCI1
Isotype:	Ig Fraction
Specificity:	This antibody recognizes Human GLCCI1 (Center).
Purification:	Protein A column, followed by peptide affinity purification

Target Details

Target:	GLCCI1
Alternative Name:	GLCCI1 (GLCCI1 Products)
Background:	Synonyms: Glucocorticoid-induced transcript 1 protein

Target Details

Molecular Weight:	58024 Da
Gene ID:	113263
NCBI Accession:	NP_612435

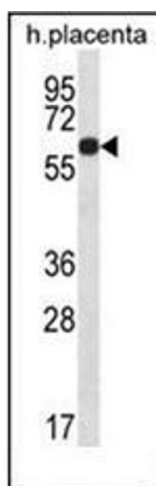
Application Details

Application Notes:	Optimal working dilution should be determined by the investigator.
Restrictions:	For Research Use only

Handling

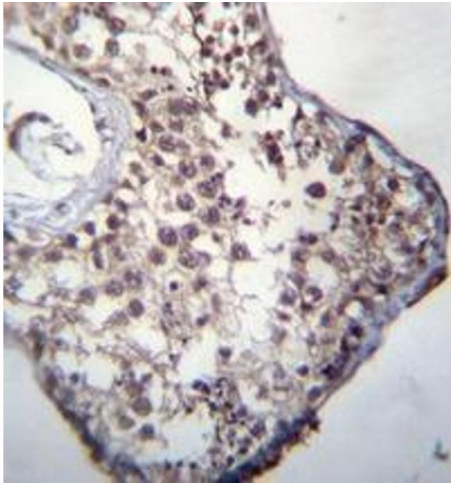
Format:	Liquid
Concentration:	0.25 mg/mL
Buffer:	PBS containing 0.09 % (W/V) Sodium Azide as preservative
Preservative:	Sodium azide
Precaution of Use:	This product contains sodium azide: a POISONOUS AND HAZARDOUS SUBSTANCE which should be handled by trained staff only.
Handling Advice:	Avoid repeated freezing and thawing.
Storage:	4 °C/-20 °C
Storage Comment:	Store undiluted at 2-8 °C for one month or (in aliquots) at -20 °C for longer.

Images



Western Blotting

Image 1. Western blot analysis of LCCI1 Antibody (Center) in human placenta tissue lysates (35ug/lane). This demonstrates the LCCI1 antibody detected the LCCI1 protein (arrow).



Immunohistochemistry (Paraffin-embedded Sections)

Image 2. Immunohistochemistry analysis in formalin fixed and paraffin embedded human testis tissue reacted with GLCCI1 Antibody (Center) followed by peroxidase conjugation of the secondary antibody and DAB staining.