



[Go to Product page](#)

Datasheet for ABIN952525
anti-GLIPR1L2 antibody (N-Term)

1 Image

Overview

Quantity:	0.4 mL
Target:	GLIPR1L2
Binding Specificity:	AA 46-76, N-Term
Reactivity:	Human
Host:	Rabbit
Clonality:	Polyclonal
Conjugate:	This GLIPR1L2 antibody is un-conjugated
Application:	Western Blotting (WB), Enzyme Immunoassay (EIA)

Product Details

Immunogen:	KLH conjugated synthetic peptide between 46-76 amino acids from the N-terminal region of Human GLIPR1-like protein 2 Genename: GLIPR1L2
Isotype:	Ig Fraction
Specificity:	This antibody recognizes Human GLIPR1-like protein 2 (N-term).
Purification:	Protein A column, followed by peptide affinity purification

Target Details

Target:	GLIPR1L2
Alternative Name:	GLIPR1-Like Protein 2 (GLIPR1L2 Products)
Background:	Synonyms: GLIPR1L2, MGC39497

Target Details

Molecular Weight:	40179 Da
Gene ID:	144321
NCBI Accession:	NP_689649

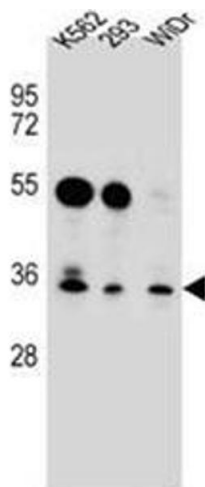
Application Details

Application Notes:	Optimal working dilution should be determined by the investigator.
Restrictions:	For Research Use only

Handling

Format:	Liquid
Concentration:	0.25 mg/mL
Buffer:	PBS containing 0.09 % (W/V) Sodium Azide as preservative
Preservative:	Sodium azide
Precaution of Use:	This product contains sodium azide: a POISONOUS AND HAZARDOUS SUBSTANCE which should be handled by trained staff only.
Handling Advice:	Avoid repeated freezing and thawing.
Storage:	4 °C/-20 °C
Storage Comment:	Store undiluted at 2-8 °C for one month or (in aliquots) at -20 °C for longer.

Images



Western Blotting

Image 1. Western blot analysis of GLIPR1L2 Antibody (N-term) in K562,293,WiDr cell line lysates (35ug/lane). This demonstrates the GLIPR1L2 antibody detected the GLIPR1L2 protein (arrow).