

Datasheet for ABIN952531  
**anti-GPI antibody (C-Term)**

## 3 Images

[Go to Product page](#)

## Overview

Quantity:	0.4 mL
Target:	GPI
Binding Specificity:	AA 452-481, C-Term
Reactivity:	Human, Mouse
Host:	Rabbit
Clonality:	Polyclonal
Conjugate:	This GPI antibody is un-conjugated
Application:	Western Blotting (WB), Enzyme Immunoassay (EIA)

## Product Details

Immunogen:	KLH conjugated synthetic peptide between 452~481 amino acids from the C-terminal region of human GPI
Isotype:	Ig Fraction
Specificity:	This antibody reacts to GPI.
Cross-Reactivity (Details):	Species reactivity (tested): Human and Mouse.
Purification:	Affinity chromatography on Protein A

## Target Details

Target:	GPI
Abstract:	<a href="#">GPI Products</a>

## Target Details

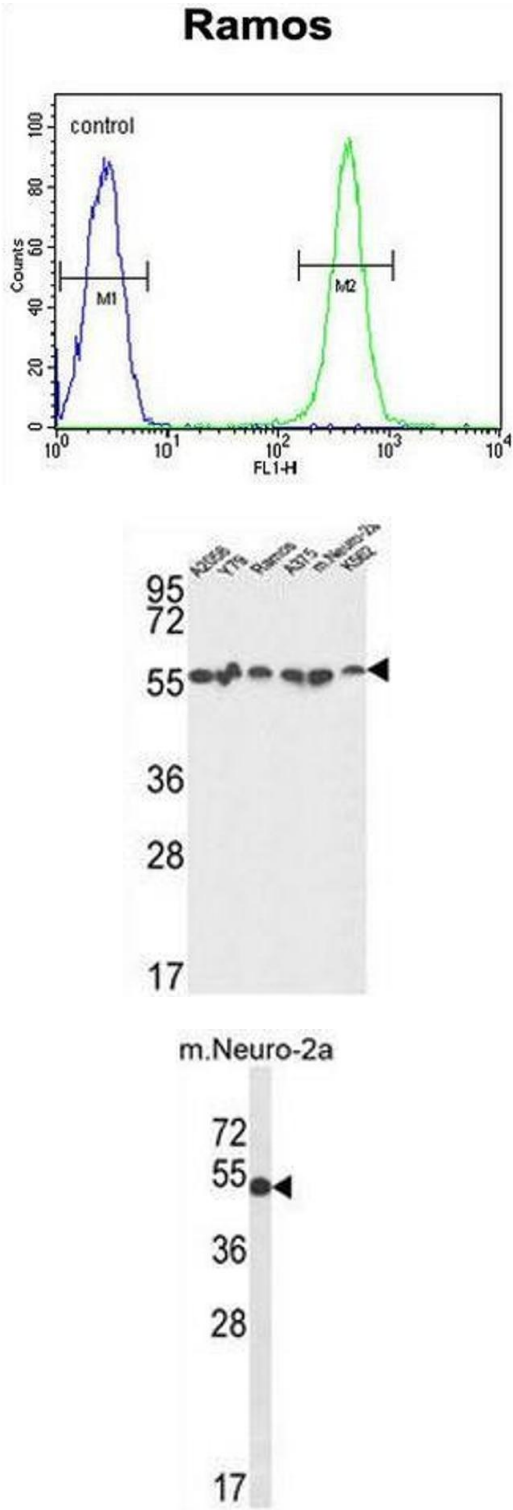
Target Type:	Viral Protein
Background:	GPI belongs to the GPI family whose members encode multifunctional phosphoglucose isomerase proteins involved in energy pathways. The protein encoded by this gene is a dimeric enzyme that catalyzes the reversible isomerization of glucose-6-phosphate and fructose-6-phosphate. The protein functions in different capacities inside and outside the cell. In the cytoplasm, the gene product is involved in glycolysis and gluconeogenesis, while outside the cell it functions as a neurotrophic factor for spinal and sensory neurons. Defects in this gene are the cause of nonspherocytic hemolytic anemia and a severe enzyme deficiency can be associated with hydrops fetalis, immediate neonatal death and neurological impairment.Synonyms: NLK, Neuroleukin, PGI, PHI, Phosphoglucose isomerase, Phosphohexose isomerase
Molecular Weight:	63147 Da
Gene ID:	2821
NCBI Accession:	<a href="#">NP_000166</a>

## Application Details

Application Notes:	Optimal working dilution should be determined by the investigator.
Restrictions:	For Research Use only

## Handling

Format:	Liquid
Concentration:	0.25 mg/mL
Buffer:	PBS, 0.09 % (W/V) sodium azide
Preservative:	Sodium azide
Precaution of Use:	This product contains sodium azide: a POISONOUS AND HAZARDOUS SUBSTANCE which should be handled by trained staff only.
Handling Advice:	Avoid repeated freezing and thawing.
Storage:	4 °C/-20 °C
Storage Comment:	Store the antibody undiluted at 2-8 °C for one month or (in aliquots) at -20 °C for longer.



Flow Cytometry

**Image 1.** GPI Antibody (C-term) flow cytometric analysis of Ramos cells (right histogram) compared to a negative control cell (left histogram).FITC-conjugated goat-anti-rabbit secondary antibodies were used for the analysis.

Western Blotting

**Image 2.** GPI Antibody (C-term) western blot analysis in A2058,Y79,Ramos,A375,K562 and mouse Neuro-2a cell line lysates (35µg/lane).This demonstrates the GPI antibody detected the GPI protein (arrow).

Western Blotting

**Image 3.** Western blot analysis of GPI Antibody (C-term) in mouse Neuro-2a cell lysates (35µg/lane).GPI (arrow) was detected using the purified Pab.