

Datasheet for ABIN952538

**anti-Glutathione Peroxidase 1 antibody (C-Term)**[Go to Product page](#)**4** Images

## Overview

Quantity:	0.4 mL
Target:	Glutathione Peroxidase 1 (GPX1)
Binding Specificity:	AA 169-199, C-Term
Reactivity:	Human, Mouse
Host:	Rabbit
Clonality:	Polyclonal
Conjugate:	This Glutathione Peroxidase 1 antibody is un-conjugated
Application:	Western Blotting (WB), Immunofluorescence (IF), Flow Cytometry (FACS), Immunohistochemistry (Paraffin-embedded Sections) (IHC (p)), Enzyme Immunoassay (EIA)

## Product Details

Immunogen:	Synthetic peptide - KLH conjugated - corresponding to the C-terminal region (between 169-199aa) of human Glutathione peroxidase 1 / GPX1.
Isotype:	Ig Fraction
Specificity:	This antibody recognizes Glutathione peroxidase 1 / GPX1.
Cross-Reactivity (Details):	Species reactivity (tested): Human, Mouse
Purification:	Purified through a Protein A column followed by peptide affinity purification

## Target Details

Target:	Glutathione Peroxidase 1 (GPX1)
---------	---------------------------------

## Target Details

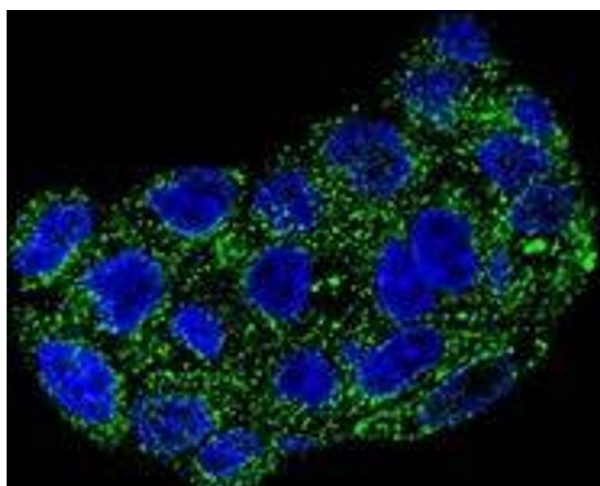
Alternative Name:	Glutathione Peroxidase 1 / GPX1 ( <a href="#">GPX1 Products</a> )
Background:	GPX1 encodes a member of the glutathione peroxidase family: Glutathione peroxidase 1. Glutathione peroxidase functions in the detoxification of hydrogen peroxide, and is one of the most important antioxidant enzymes in humans. This protein is one of only a few proteins known in higher vertebrates to contain selenocysteine, which occurs at the active site of glutathione peroxidase and is coded by UGA, that normally functions as a translation termination codon. In addition, this protein is characterized in a polyalanine sequence polymorphism in the N-terminal region, which includes three alleles with five, six or seven alanine (ALA) repeats in this sequence.Synonyms: Cellular glutathione peroxidase, GSHPx-1
Gene ID:	2876
NCBI Accession:	<a href="#">NP_000572</a>
Pathways:	<a href="#">Thyroid Hormone Synthesis</a> , <a href="#">Sensory Perception of Sound</a> , <a href="#">Skeletal Muscle Fiber Development</a> , <a href="#">Cell RedoxHomeostasis</a> , <a href="#">Negative Regulation of intrinsic apoptotic Signaling</a> , <a href="#">SARS-CoV-2 Protein Interactome</a>

## Application Details

Application Notes:	Optimal working dilution should be determined by the investigator.
Restrictions:	For Research Use only

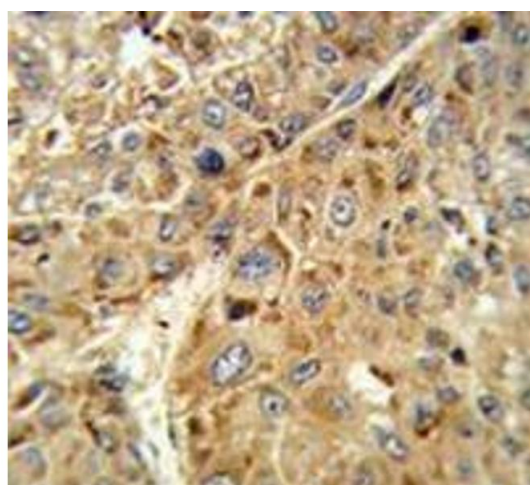
## Handling

Format:	Liquid
Concentration:	0.25 mg/mL
Buffer:	PBS with 0.09 % (W/V) Sodium azide
Preservative:	Sodium azide
Precaution of Use:	This product contains sodium azide: a POISONOUS AND HAZARDOUS SUBSTANCE which should be handled by trained staff only.
Handling Advice:	Avoid repeated freezing and thawing.
Storage:	4 °C/-20 °C
Storage Comment:	Store undiluted at 2-8 °C for one month or (in aliquots) at -20 °C for longer.



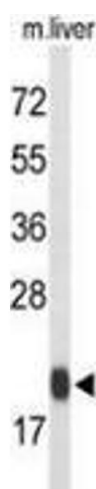
### Immunofluorescence

**Image 1.** Confocal immunofluorescent analysis of GPX1 in HepG2 cells using Glutathione peroxidase 1 / GPX1 Antibody (C-term), followed by Alexa Fluor 488-conjugated goat anti-rabbit IgG (green). DAPI was used to stain the cell nuclear (blue).



### Immunohistochemistry (Paraffin-embedded Sections)

**Image 2.** Immunohistochemistry analysis of human hepatocarcinoma tissue (Formalin-fixed, Paraffin-embedded) using Glutathione peroxidase 1 / GPX1 Antibody (C-term), followed by peroxidase-conjugated secondary antibody and DAB staining. This data demonstrates the use of this antibody for IHC; clinical relevance has not been evaluated.



### Western Blotting

**Image 3.** Western blot analysis of Glutathione peroxidase 1 / GPX1 (arrow) in mouse liver tissue lysates (35ug/lane) using Glutathione peroxidase 1 / GPX1 Antibody (C-term).

Please check the [product details page](#) for more images. Overall 4 images are available for ABIN952538.