

Datasheet for ABIN952545

**anti-Glycerol Kinase antibody (N-Term)****2** Images[Go to Product page](#)

## Overview

Quantity:	0.4 mL
Target:	Glycerol Kinase (GK)
Binding Specificity:	AA 23-51, N-Term
Reactivity:	Human
Host:	Rabbit
Clonality:	Polyclonal
Conjugate:	This Glycerol Kinase antibody is un-conjugated
Application:	Western Blotting (WB), Immunohistochemistry (Paraffin-embedded Sections) (IHC (p)), Enzyme Immunoassay (EIA)

## Product Details

Immunogen:	KLH conjugated synthetic peptide between 23-51 amino acids from the N-terminal region of Human Glycerol kinase Genename: GK
Isotype:	Ig Fraction
Specificity:	This antibody recognizes Human Glycerol kinase (N-term).
Purification:	Protein A column, followed by peptide affinity purification

## Target Details

Target:	Glycerol Kinase (GK)
Alternative Name:	Glycerol Kinase ( <a href="#">GK Products</a> )

## Target Details

**Background:** The product of this gene belongs to the FGGY kinase family of proteins and encodes glycerol kinase. Glycerol kinase is a key enzyme in the regulation of glycerol uptake and metabolism. It catalyzes the phosphorylation of glycerol by ATP, yielding ADP and glycerol-3-phosphate. Defects in this gene are the cause of glycerol kinase deficiency (GKD). Alternatively spliced transcript variants encoding different isoforms have been identified. Synonyms: ATP:glycerol 3-phosphotransferase, GK, GKD, Glycerokinase

**Molecular Weight:** 61245 Da

**Gene ID:** 2710

**NCBI Accession:** [NP\\_000158](#)

## Application Details

**Application Notes:** Optimal working dilution should be determined by the investigator.

**Restrictions:** For Research Use only

## Handling

**Format:** Liquid

**Concentration:** 0.25 mg/mL

**Buffer:** PBS containing 0.09 % (W/V) Sodium Azide as preservative

**Preservative:** Sodium azide

**Precaution of Use:** This product contains sodium azide: a POISONOUS AND HAZARDOUS SUBSTANCE which should be handled by trained staff only.

**Handling Advice:** Avoid repeated freezing and thawing.

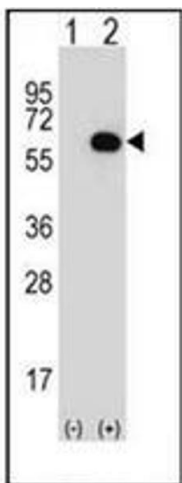
**Storage:** 4 °C/-20 °C

**Storage Comment:** Store undiluted at 2-8 °C for one month or (in aliquots) at -20 °C for longer.



#### Immunohistochemistry (Paraffin-embedded Sections)

**Image 1.** Immunohistochemistry analysis in formalin fixed and paraffin embedded human testis tissue reacted with Glycerol kinase Antibody (N-term) followed by peroxidase conjugation of the secondary antibody and DAB staining.



#### Western Blotting

**Image 2.** Western blot analysis of GK (arrow) using Glycerol kinase Antibody (N-term) Cat.-No AP51844PU-N. 293 cell lysates (2 ug/lane) either nontransfected (Lane 1) or transiently transfected (Lane 2) with the GK gene.