

Datasheet for ABIN952548
anti-GLRB antibody (N-Term)

2 Images

[Go to Product page](#)

Overview

Quantity:	0.4 mL
Target:	GLRB
Binding Specificity:	AA 102-132, N-Term
Reactivity:	Human, Mouse
Host:	Rabbit
Clonality:	Polyclonal
Application:	Western Blotting (WB), Enzyme Immunoassay (EIA)

Product Details

Immunogen:	KLH conjugated synthetic peptide between 102-132 amino acids from the N-terminal region of Human Glycine receptor beta Genename: GLRB
Isotype:	Ig Fraction
Specificity:	This antibody recognizes Human and Mouse Glycine receptor beta (N-term).
Purification:	Protein A column, followed by peptide affinity purification

Target Details

Target:	GLRB
Alternative Name:	Glycine Receptor beta (GLRB Products)
Background:	This gene encodes the beta subunit of the glycine receptor, which is a pentamer composed of alpha and beta subunits. The receptor functions as a neurotransmitter-gated ion channel, which produces hyperpolarization via increased chloride conductance due to the binding of glycine to

Target Details

the receptor. Mutations in this gene cause startle disease, also known as hereditary hyperekplexia or congenital stiff-person syndrome, a disease characterized by muscular rigidity. Alternative splicing results in multiple transcript variants. Synonyms: GLRB, Glycine receptor 58 kDa subunit

Molecular Weight: 56122 Da

Gene ID: 2743

NCBI Accession: [NP_000815](#)

Application Details

Application Notes: Optimal working dilution should be determined by the investigator.

Restrictions: For Research Use only

Handling

Format: Liquid

Concentration: 0.25 mg/mL

Buffer: PBS containing 0.09 % (W/V) Sodium Azide as preservative

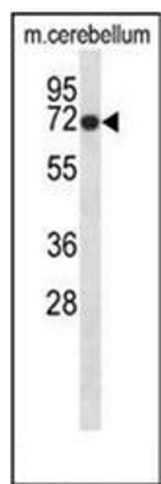
Preservative: Sodium azide

Precaution of Use: This product contains sodium azide: a POISONOUS AND HAZARDOUS SUBSTANCE which should be handled by trained staff only.

Handling Advice: Avoid repeated freezing and thawing.

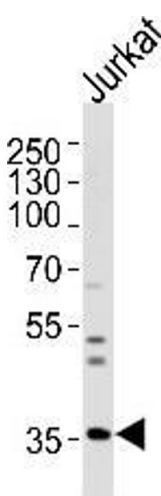
Storage: 4 °C/-20 °C

Storage Comment: Store undiluted at 2-8 °C for one month or (in aliquots) at -20 °C for longer.



Western Blotting

Image 1. Western blot analysis of Glycine receptor beta Antibody (N-term) in mouse cerebellum tissue lysates (35ug/lane). This demonstrates the GLRB antibody detected the GLRB protein (arrow).



Western Blotting

Image 2. Western blot analysis of lysate from Jurkat cell line, using Glycine receptor beta Antibody (N-term) Cat.-No AP51858PU-N. Antibody was diluted at 1/1000 at each lane. A Goat anti-Rabbit IgG H&L(HRP) at 1/5000 dilution was used as the secondary antibody. Lysate at 35 µg per lane.