

Datasheet for ABIN952549

anti-PYGM antibody

4 Images

[Go to Product page](#)

Overview

Quantity:	50 µg
Target:	PYGM
Reactivity:	Human, Mouse, Rat
Host:	Mouse
Clonality:	Monoclonal
Conjugate:	This PYGM antibody is un-conjugated
Application:	Western Blotting (WB), Immunohistochemistry (Paraffin-embedded Sections) (IHC (p)), Enzyme Immunoassay (EIA)

Product Details

Immunogen:	Recombinant protein.
Clone:	2C4
Isotype:	IgG1
Specificity:	This antibody recognizes PYGM
Cross-Reactivity (Details):	Species reactivity (expected):Mouse and Rat. Species reactivity (tested):Human.
Purification:	Protein A Chromatography

Target Details

Target:	PYGM
---------	------

Target Details

Alternative Name:	Glycogen Phosphorylase Muscle Form (PYGM Products)
Background:	Phosphorylase is an important allosteric enzyme in carbohydrate metabolism. Enzymes from different sources differ in their regulatory mechanisms and in their natural substrates. However, all known phosphorylases share catalytic and structural properties.Synonyms: GPMM, Myophosphorylase, PYGM, Phosphorylase A, Phosphorylase B
Gene ID:	5837
NCBI Accession:	NP_005600
UniProt:	P11217
Pathways:	Cellular Glucan Metabolic Process

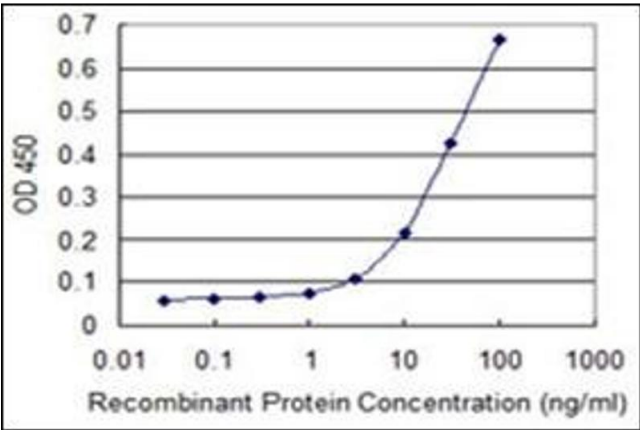
Application Details

Application Notes:	Optimal working dilution should be determined by the investigator.
Restrictions:	For Research Use only

Handling

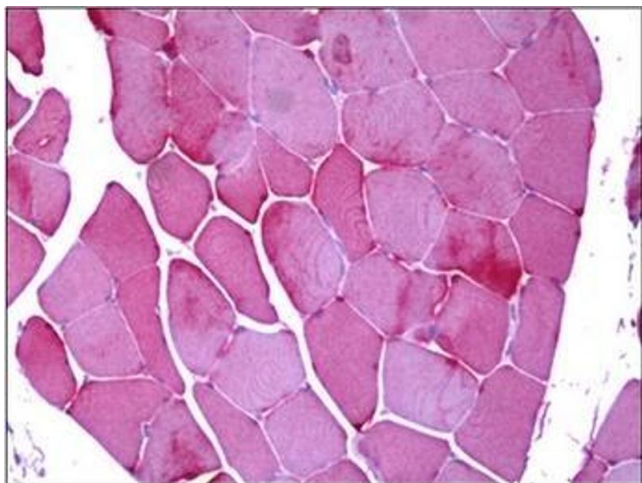
Buffer:	PBS, pH 7.2
Handling Advice:	Avoid repeated freezing and thawing.
Storage:	4 °C/-20 °C
Storage Comment:	Store the antibody undiluted at 2-8 °C for one month or (in aliquots) at -20 °C for longer.

Images



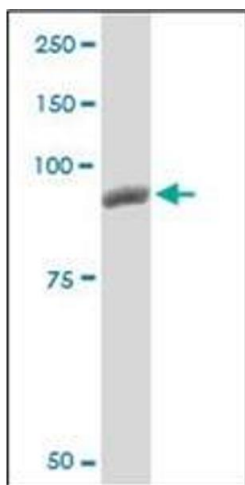
ELISA

Image 1.



Immunohistochemistry

Image 2.



Western Blotting

Image 3.

Please check the [product details page](#) for more images. Overall 4 images are available for ABIN952549.